

AproCables Catalog



AproCables
388 S. Abbott Ave
Milpitas
CA, USA 95035
Email: aprocables@metaplume.com
Tel: + 1 408 262 3678

www.aprocables.com



Table of Contents

Introduction	7
Singlemode Cables	8
Singlemode Fiber Optic Patch Cords.....	8
Duplex APC singlemode patch cord	8
Duplex singlemode 9/125 patch cord	9
Duplex singlemode OFNP plenum patch cord	10
Simplex OFNP plenum OM3 10G patch cord	11
Simplex singlemode 3.0 9/125 patch cord	12
Simplex singlemode APC patch cord.....	13
Simplex singlemode OFNP plenum patch cord	14
Singlemode Fiber Optic Pigtails	15
Simplex APC singlemode pigtail	15
Singlemode 3.0 OFNP plenum pigtail.....	16
Singlemode 3.0mm 9/125 pigtail	17
Singlemode 9/125 12 fiber 900u pigtail	18
Multimode Cables	19
Multimode Fiber Optic Patch Cords.....	19
Duplex multimode 50/125 patch cord.....	19
Duplex multimode 62.5/125 patch cord	20
Duplex multimode OM3 10G 50/125 patch cord.....	21
Multimode OFNP plenum 62.5/125 pigtail	22
Simplex multimode 50/125 patch cord	23
Simplex multimode 62.5/125 patch cord	24
Simplex multimode OFNP plenum 50/125 patch cord	25
Simplex multimode OFNP plenum 62.5/125 patch cord.....	26
Simplex multimode OFNP plenum OM3 10G patch cord	27

Simplex multimode OM3 10G 50/125 patch cord	28
Simplex multimode OFNP plenum 50/125 patch cord	29
Multimode Fiber Optic Pigtails	30
Multimode 12 fiber 900u 50/125 pigtail	30
Multimode 12 fiber 900u 62.5/125 pigtail	31
Multimode 12 fiber 900u OM3 10G pigtail	32
Multimode 3.0 62.5/125 pigtail.....	33
Multimode 3.0 OM3 pigtail	34
OFNP multimode plenum 50/125 pigtail.....	35
OFNP multimode plenum 62.5/125 pigtail	36
OFNP plenum OM3 10G pigtail.....	37
Multimode Fiber Optic Trunk Cables	38
Multimode 50/125 MPO male to MPO male.....	38
Multimode 50/125 OM3 10G MPO male to MPO male.....	38
Connectors	39
FC Connectors.....	39
FC 0.9 APC connector kit (100 pcs).....	39
FC 0.9 MM connector kit (100 pcs).....	40
FC 0.9 SM connector kit (100 pcs)	41
FC 2.0 APC connector kit (100 pcs).....	42
FC 2.0 MM connector kit (100 pcs).....	43
FC 2.0 SM connector kit (100 pcs)	44
FC 3.0 APC connector kit (100 pcs).....	45
FC 3.0 MM connector kit (100 pcs).....	46
FC 3.0 SM connector kit (100 pcs)	47

LC Connectors.....	48
LC 0.9 APC connector kit (100 pcs).....	48
LC 0.9 MM connector kit (100 pcs).....	49
LC 0.9 SM connector kit (100 pcs).....	50
LC 2.0 APC connector kit (100 pcs).....	51
LC 2.0 MM connector kit (100 pcs).....	52
LC 2.0 SM connector kit (100 pcs).....	53
LC 3.0 APC connector kit (100 pcs).....	54
LC 3.0 MM connector kit (100 pcs).....	55
LC 3.0 SM connector kit (100 pcs).....	56
SC Connectors.....	57
SC 0.9 APC connector kit (100 pcs).....	57
SC 0.9 MM connector kit (100 pcs).....	58
SC 0.9 SM connector kit (100 pcs).....	59
SC 2.0 APC connector kit (100 pcs).....	60
SC 2.0 MM connector kit (100 pcs).....	61
SC 2.0 SM connector kit (100 pcs).....	62
SC 3.0 APC connector kit (100 pcs).....	63
SC 3.0 MM connector kit (100 pcs).....	64
SC 3.0 SM connector kit (100 pcs).....	65
ST Connectors.....	66
ST 0.9 MM connector kit (100 pcs).....	66
ST 0.9 SM connector kit (100 pcs).....	67
ST 2.0 MM connector kit (100 pcs).....	68
ST 2.0 SM connector kit (100 pcs).....	69
ST 3.0 MM connector kit (100 pcs).....	70
ST 3.0 SM connector kit (100 pcs).....	71

Adapters	72
FC Adapters.....	72
FC adapter, D ring	72
FC adapter, flange type	73
Hybrid Adapters	74
LC-FC adapter	74
LC-SC adapter.....	75
LC-ST adapter	76
ST-FC adapter	77
ST-SC adapter.....	78
LC Adapters.....	79
LC APC Duplex adapter, SC footprint.....	79
LC APC Duplex adapter, stand type.....	80
LC APC Quad adapter, stand type	81
LC APC Simplex adapter	82
LC duplex adapter -metal housing.....	83
LC multimode Duplex adapter, SC footprint	84
LC multimode Duplex adapter, stand type	85
LC multimode Quad adapter, stand type.....	86
LC multimode Simplex adapter	87
LC OM3 10G Duplex adapter, stand type	88
LC singlemode Duplex adapter, SC footprint	89
LC singlemode Duplex adapter, stand type	90
LC singlemode Quad adapter, stand type.....	91
LC singlemode Simplex adapter.....	92
LC OM3 10G Quad adapter, stand type.....	93

Other Adapters	94
E2000 APC adapter	94
E2000 multimode adapter.....	95
E2000 singlemode adapter.....	96
MPO adapter	97
MTRJ adapter	98
MU adapter.....	98
SC Adapters.....	99
Optic SC adapter	99
SC APC Duplex adapter	100
SC APC Simplex adapter.....	101
SC multimode Duplex adapter	102
SC singlemode Duplex adapter	103
SC singlemode Duplex adapter (metal housing).....	104
SC singlemode Simplex adapter	105
SC singlemode Simplex adapter (metal housing)	106
ST Adapters.....	107
ST multimode adapter.....	107
ST singlemode adapter.....	108

Introduction

AproCables can supply a wide range of fiber optic cables and assembly products. AproCables provides the broadest choice of OM3 10G LOF patch cords to the industry including ST, FC, SC, FDDI, ESCON, LC, MTRJ, E2000 and MU with ultra-polished (UPC). With our state-of art testing equipment, refined polishing machine, advanced polishing procedure and a group of experienced technicians, we make reliable and top quality patch cords at an affordable price. Every patch cord supplied by AproCables is guaranteed to be well polished and exceeds the industry standard. We test every connector for the exact insertion loss and return loss.

How to Order

You can browse through our online catalogue and place an order online by visiting the [AproCables website](#) (with convenient payment via PayPal).

Our connector kits are sold in lots of 100 pieces. The minimum order quantity on our online store is therefore 100 pieces, although you can order multiple lots of 100 pieces. For very large orders we recommend that you [contact us for a quote](#).

Custom Orders

Our cable assemblies can be customized to your needs. You can [make an inquiry](#) to receive a custom quote to account for larger quantities and custom sizes. Our regular cable lengths are 1, 2, 3, 5 or 10 feet or meters but we can supply custom lengths with a quick turnaround.

If a product is not listed in this catalog, please [ask us about it](#).

Singlemode Cables

Singlemode Fiber Optic Patch Cords

Duplex APC singlemode patch cord



Product Code: DAPC

Connector types: LC/APC, ST/APC, FC/APC, SC/APC

Lengths available: 1, 2, 3, 4, 5, 7, 10, 15, 20, 25, 30, 50 or custom lengths.

Applications

- Local area networks.
- Fast Ethernet.
- Telecommunication networks.
- Fiber channel.
- ATM networks.
- Instrumentation.

Description

AproCables singlemode fiber optic patch cords are essential to meet the requirements of today's high-speed data networks. These patch cords can be used throughout the network in cross-connect, test or equipment areas to link optical equipment.

AproCables provides the broadest choice of single mode patch cords to the industry including ST, FC, SC, FDDI, ESCON, LC, MTRJ, E2000 and MU Angle-Polished (APC).

With our state-of art testing equipment, refined polishing machine, advanced polishing procedure and a group of experienced technicians, we make reliable and top quality patch cord at an affordable price.

Duplex singlemode 9/125 patch cord



Description

AproCables singlemode fiber optic patch cords are essential to meet the requirements of today's high-speed data networks. These patch cords can be used throughout the network in cross-connect, test or equipment areas to link optical equipment.

Product code: D9PC

Connector types: LC/APC, ST/APC, FC/APC, SC/APC

Lengths available: 1, 2, 3, 4, 5, 7, 10, 15, 20, 25, 30, 50 or custom lengths.

AproCables provides the broadest choice of patch cords to the industry including ST, FC, SC, FDDI, ESCON, LC, MTRJ, E2000 and MU with UPC (ultra-polished), and APC (angle-polished). With our state-of the art testing equipment, refined polishing machine, advanced polishing procedure, and a group of experienced technicians, we make reliable and top quality patch cords at affordable prices. Every patch cord supplied by AproCables is guaranteed to be well polished and exceeds the industry standards.

Specifications

- Singlemode ultra polish connectors (UPC)
- Low insertion loss (≤ 0.3 dB)
- Pre-radiused, PC-end finish for physical contact
- Repeatability (500 mating cycles): ≤ 0.2 dB
- Tensile strength: ≥ 5 KG
- Exchangeability: ≤ 0.2 dB
- Operation temperature: -20°C to $+70^{\circ}\text{C}$
- Storage temperature: -40°C to $+70^{\circ}\text{C}$
- RoHS compliant
- Standard product made on $\Phi 3.00$ mm PVC jacket (also available in OFNP plenum or LSZH jacket)
- Meet all international reliability standards

Applications

- Local area networks
- Fast Ethernet
- Telecommunication networks
- Fiber channel
- ATM networks
- Instrumentation

Duplex singlemode OFNP plenum patch cord



Description

OFNP stands for optical fiber nonconductive plenum. OFNP cables have fire-resistance and low smoke production characteristics. They can be installed in ducts, plenums and other spaces used for building airflow. This is the highest fire rating fiber cable and no other cable types can be used as substitutes.

Product Code: D9PC-P

Connector types: LC/APC, ST/APC, FC/APC, SC/APC

Lengths available: 1, 2, 3, 4, 5, 7, 10, 15, 20, 25, 30, 50 or custom lengths.

AproCables offer OFNP plenum FT6 rated SM fiber optic patch cords, they are essential to meet the requirements of today's high-speed data networks. These patch cords can be used throughout the network in cross-connect, test or equipment areas to link optical equipment with 1 year warranty. AproCables provides the broadest choice of patch cords to the industry including ST, FC, SC, FDDI, ESCON, LC, MTRJ, E2000 and MU with ultra-polished (UPC), angle-polished (APC).

Specifications

- Singlemode ultra polish connectors (UPC).
- Low insertion loss (≤ 0.3 dB) and return Loss (> 55 dB).
- Pre-radiused, PC-end finish for physical contact.
- Repeatability (500 mating cycles): ≤ 0.2 dB.
- Tensile strength: ≥ 5 KG.
- Exchangeability: ≤ 0.2 dB.
- Operation temperature: -20°C to $+70^{\circ}\text{C}$.
- Storage temperature: -40°C to $+70^{\circ}\text{C}$.
- RoHS compliant.
- Standard product made on $\Phi 3.00$ mm OFNR PVC jacket (also available in OFNP plenum & LSZH jacket).
- Meet all international reliability standards.

Applications

- Local area networks.
- Fast Ethernet.
- Telecommunication networks.
- Fiber channel.
- ATM networks.
- Instrumentation.

Simplex OFNP plenum OM3 10G patch cord



Description

OFNP stands for optical fiber nonconductive plenum. OFNP cables have fire-resistance and low smoke production characteristics. They can be installed in ducts, plenums and other spaces used for building airflow. This is the highest fire rating fiber cable and no other cable types can be used as substitutes.

AproCables provides OM3, Laser speed Duplex multimode 50/125um AQUA 10G Fiber patch cords. They are designed to run advanced application to meet the IEEE 802.3 specification.

LOF 10G fiber patch cords (OM3 10G fiber patch cord) provide 10 gigabit data transfer speeds in high bandwidth applications 5 times faster than standard 50um fiber cable. It works with both VCSEL laser and LED sources.

Product Code: SOM3PC-P

Connector types: LC/APC, ST/APC, FC/APC, SC/APC

Lengths available: 1, 2, 3, 4, 7, 10, 15, 20, 25, 30, 50 or custom lengths.

OM3 10G laser-optimized optical fiber (LOF) patch cords intended to support high-speed 10-gigabit applications can be used as cross-connect jumpers, equipment and work area cords. We provide OM3, Laser speed Duplex multimode 50/125um AQUA 10G fiber patch cords. All AproCables LOF patch cords are manufactured using riser grade cable (OFNR) or plenum grade cable (OFNP) and are 100% factory tested for insertion and return loss to ensure transmission performance per ANSI/TIA-568-C.3 standard specifications.

Specifications

- Fiber type: 50/125 multimode fibers 850nm, 1310nm or 1550nm.
- Low insertion loss (≤ 0.3 dB).
- Pre-radiused, PC-end finish for physical contact.
- Repeatability (500 mating cycles): ≤ 0.2 dB.
- Tensile strength: ≥ 5 KG.
- Exchangeability: ≤ 0.2 dB.
- Operation temperature: -20°C to $+70^{\circ}\text{C}$.
- Storage temperature: -40°C to $+70^{\circ}\text{C}$.
- RoHS compliant.
- Standard product made on $\Phi 3.00\text{mm}$ OFNR PVC jacket (also available in OFNP plenum & LSZH jacket).
- Meet all international reliability standards.

Applications

- Local area networks.
- Fast Ethernet.
- Telecommunication networks.
- Fiber channel.
- ATM networks.
- Instrumentation.

Simplex singlemode 3.0 9/125 patch cord



Product Code: S9PC

Connector types: LC/APC,
ST/APC, FC/APC, SC/APC

Lengths available: 1, 2, 3, 4
5, 7, 10, 15, 20, 25, 30, 50 or
custom lengths.

Specifications

- Singlemode ultra polish connectors (UPC).
- Low insertion loss (≤ 0.3 dB) and return Loss (> 55 dB).
- Pre-radiused, PC-end finish for physical contact.
- Repeatability (500 mating cycles): ≤ 0.2 dB.
- Tensile strength: ≥ 5 KG.
- Exchangeability: ≤ 0.2 dB.
- Operation temperature: -20°C to $+70^{\circ}\text{C}$.
- Storage temperature: -40°C to $+70^{\circ}\text{C}$.
- RoHS compliant.
- Standard product made on $\Phi 3.00$ mm OFNR PVC jacket (also available in OFNP plenum & LSZH jacket).
- Meet all international reliability standards.

Applications

- Local area networks.
- Fast Ethernet.
- Telecommunication networks.
- Fiber channel.
- ATM networks.
- Instrumentation.

Description

AproCables singlemode fiber optic patch cords are essential to meet the requirements of today's high-speed data networks.

These patch cords can be used throughout the network in cross-connect, test or equipment areas to link optical equipment.

Simplex singlemode APC patch cord



Product Code: SAPC

Connector types: LC/APC, ST/APC, FC/APC, SC/APC

Lengths available: 1, 2, 3, 4, 5, 7, 10, 15, 20, 25, 30, 50 or custom lengths.

Description

AproCables multimode fiber optic pigtailed are essential to meet the requirements of today's high-speed data networks. These patch cords can be used throughout the network in cross-connect, test or equipment areas to link optical equipment.

AproCables provides the broadest choice of single mode patch cords to the industry including ST, FC, SC, FDDI, ESCON, LC, MTRJ, E2000 and MU angle-polished (APC).

With our state-of art testing equipment, refined polishing machine, advanced polishing procedure and a group of experienced technicians, we make reliable and top quality patch cord at an affordable price. Every patch cord supplied by AproCables is guaranteed to be well polished and exceeds the industry standard.

Specifications

- Singlemode angle polish connectors (APC).
- Low insertion loss (≤ 0.2 dB) and return loss (> 65 dB).
- Pre-radiused, PC-end finish for physical contact.
- Repeatability (500 mating cycles): ≤ 0.2 dB.
- Tensile strength: ≥ 5 KG.
- Exchangeability: ≤ 0.2 dB.
- Operation temperature: -20°C to $+70^{\circ}\text{C}$.
- Storage temperature: -40°C to $+70^{\circ}\text{C}$.
- RoHS compliant.
- Standard product made on $\Phi 3.00$ mm PVC jacket (also available in plenum & LSZH jacket).
- Meet all international reliability standards.

Applications

- Local area networks.
- Fast Ethernet.
- Telecommunication networks.
- Fiber channel.
- ATM networks.
- Instrumentation.

Simplex singlemode OFNP plenum patch cord



Product Code: S9PC-P

Connector types: LC/APC, ST/APC, FC/APC, SC/APC

Lengths available: 1, 2, 3, 4, 5, 7, 10, 15, 20, 25, 30, 50 or custom lengths.

Description

OFNP stands for optical fiber nonconductive plenum. OFNP cables have fire-resistance and low smoke production characteristics. They can be installed in ducts, plenums and other spaces used for building airflow. This is the highest fire rating fiber cable and no other cable types can be used as substitutes.

AproCables offer OFNP plenum FT6 rated SM fiber optic patch cords, they are essential to meet the requirements of today's high-speed data networks. These patch cords can be used throughout the network in cross-connect, test or equipment areas to link optical equipment with 1 year warranty.

AproCables provides the broadest choice of patch cords to the industry including ST, FC, SC, FDDI, ESCON, LC, MTRJ, E2000 and MU with Ultra-polished (UPC), angle-polished (APC).

Specifications

- Singlemode ultra polish connectors (UPC).
- Low insertion loss (≤ 0.3 dB) and return Loss (> 55 dB).
- Pre-radiused, PC-end finish for physical contact.
- Repeatability (500 mating cycles): ≤ 0.2 dB.
- Tensile strength: ≥ 5 KG.
- Exchangeability: ≤ 0.2 dB.
- Operation temperature: -20°C to $+70^{\circ}\text{C}$.
- Storage temperature: -40°C to $+70^{\circ}\text{C}$.
- RoHS compliant.
- Standard product made on $\Phi 3.00$ mm OFNR PVC jacket (also available in OFNP plenum & LSZH jacket).
- Meet all international reliability standards.

Applications

- Local area networks.
- Fast Ethernet.
- Telecommunication networks.
- Fiber channel.
- ATM networks.
- Instrumentation.

Singlemode Fiber Optic Pigtails

Simplex APC singlemode pigtail



Product Code: SAPT

Connector types: LC/APC, ST/APC, FC/APC, SC/APC

Lengths available: 1, 2, 3, 4, 5, 7, 10, 15, 20, 25, 30, 50 or custom lengths.

Description

AproCables singlemode fiber optic patch cords are essential to meet the requirements of today's high-speed data networks. These patch cords can be used throughout the network in cross-connect, test or equipment areas to link optical equipment.

AproCables provides the broadest choice of single mode patch cords to the industry including ST, FC, SC, FDDI, ESCON, LC, MTRJ, E2000 and MU angle-polished (APC).

Specifications

- Singlemode angle polish connectors (APC)
- Low insertion loss (≤ 0.3 dB)
- Pre-radiused, PC-end finish for physical contact
- Repeatability (500 mating cycles): ≤ 0.2 dB
- Tensile strength: ≥ 5 KG
- Exchangeability: ≤ 0.2 dB
- Operation temperature: -20°C to $+70^{\circ}\text{C}$
- Storage temperature: -40°C to $+70^{\circ}\text{C}$.
- RoHS compliant
- Standard product made on $\Phi 3.00$ mm PVC jacket (also available in OFNP plenum or LSZH jacket)
- Meets all international reliability standards.

Applications

- Local area networks
- Fast Ethernet
- Telecommunication networks
- Fiber channel
- ATM networks
- Instrumentation

Singlemode 3.0 OFNP plenum pigtail



Description

OFNP stands for optical fiber nonconductive plenum. OFNP cables have fire-resistance and low smoke production characteristics. They can be installed in ducts, plenums and other spaces used for building airflow. This is the highest fire rating fiber cable and no other cable types can be used as substitutes.

Product Code: S9PT-P

Connector types: LC/APC, ST/APC, FC/APC, SC/APC

Lengths available: 1, 2, 3, 4, 5, 7, 10, 15, 20, 25, 30, 50 or custom lengths.

AproCables offer OFNP plenum FT6 rated SM fiber optic patch cords, they are essential to meet the requirements of today's high-speed data networks. These patch cords can be used throughout the network in cross-connect, test or equipment areas to link optical equipment with 1 year warranty.

Specifications

- Singlemode ultra polish connectors (UPC).
- Low insertion loss (≤ 0.3 dB) and return Loss (> 55 dB).
- Pre-radiused, PC-end finish for physical contact.
- Repeatability (500 mating cycles): ≤ 0.2 dB.
- Tensile strength: ≥ 5 KG.
- Exchangeability: ≤ 0.2 dB.
- Operation temperature: -20°C to $+70^{\circ}\text{C}$.
- Storage temperature: -40°C to $+70^{\circ}\text{C}$.
- RoHS compliant.
- Standard product made on $\Phi 3.00$ mm OFNR PVC jacket (also available in OFNP plenum & LSZH jacket).
- Meet all international reliability standards.

Applications

- Local area networks.
- Fast Ethernet.
- Telecommunication networks.
- Fiber channel.
- ATM networks.
- Instrumentation.

Singlemode 3.0mm 9/125 pigtail



Product Code: S9PT

Connector types: LC/APC, ST/APC, FC/APC, SC/APC

Lengths available: 1, 2, 3, 4, 5, 7, 10, 15, 20, 25, 30, 50 or custom lengths.

Description

AproCables singlemode fiber optic pigtails are essential to meet the requirements of today's high-speed data networks. These pigtails can be used throughout the network in cross-connect, test or equipment areas to link optical equipment.

We provide high quality 9/125 single mode fiber pigtail offered in UPC (ultra polish) & APC (angle polished), used primarily to splice outside plant cables. The pigtail is a one-ended factory terminated fiber with a protection of tight buffer. 100% optically inspected, insertion loss testing performed on every assembly. Available connectors: LC, SC, ST, FC, MU, E2000.

Specifications

Insertion loss specifications	Return loss specifications
Single mode UPC loss: < -0.25dB	Single mode APC: < -65dB
Single mode APC loss: < -0.35dB	Single mode UPC: < -55dB
End face geometry specifications	End face surface quality
APC radius of curvature: 5-12mm	Single mode: No defects or scratches@ 400x magnification
UPC radius of curvature: 10-25mm	
Offset: < 50um	
APC angle: 8 degree +/- 0.5 degree	
Fiber height: +/- 50nm	

Singlemode 9/125 12 fiber 900u pigtail



Description

AproCables singlemode fiber optic pigtails are essential to meet the requirements of today's high-speed data networks. These pigtails can be used throughout the network in cross-connect, test or equipment areas to link optical equipment.

Product Code: 12C9PT

Connector types: LC/APC, ST/APC, FC/APC, SC/APC

Lengths available: 1, 2, 3, 4, 5, 7, 10, 15, 20, 25, 30, 50 or custom lengths.

We provide high quality 9/125 single mode fiber pigtail offered in UPC (ultra polished) & APC (angle polished), used primarily to splice outside plant cables. Many times there is a need to match the pigtail to the color coded outside the plant fiber cable. AproCables offers a kit of pigtails with either a 6- or a 12-fiber color coded buffer based on the standard blue/orange/green/brown/slate color code.

The pigtail is a one-ended factory terminated fiber with a protection of tight buffer. They are 100% optically inspected, and tested for insertion loss on every assembly. Available connectors: LC, SC, ST, FC, MU, and E2000.

Specifications

Insertion loss specifications	Return loss specifications
Single mode UPC loss: < -0.25dB	Single mode APC: < -65dB
Single mode APC loss: < -0.35dB	Single mode UPC: < -55dB
End face geometry specifications	End face surface quality
APC radius of curvature: 5-12mm	Single mode: No defects or scratches@ 400x magnification
UPC radius of curvature: 10-25mm	
Offset: < 50um	
APC angle: 8 degree +/- 0.5 degree	
Fiber height: +/- 50nm	

Multimode Cables

Multimode Fiber Optic Patch Cords

Duplex multimode 50/125 patch cord



Product Code: D5PC

Connector types:

LC/APC, ST/APC, FC/APC, SC/APC

Lengths available: 1, 2, 3, 4, 5, 7, 10, 15, 20, 25, 30, 50 or custom lengths.

Specifications

- Fiber Type: OM2 50/125 multimode fibers 850nm,1310nm or 1550nm.
- Low insertion loss (≤ 0.3 dB).
- Pre-radiused, PC-end finish for physical contact.
- Repeatability (500 mating cycles): ≤ 0.2 dB.
- Tensile strength: ≥ 5 KG.
- Exchangeability: ≤ 0.2 dB.
- Operation temperature: -20°C to $+70^{\circ}\text{C}$.
- Storage temperature: -40°C to $+70^{\circ}\text{C}$.
- RoHS compliant.
- Standard product made on $\Phi 3.00$ mm PVC jacket (also available in OFNP plenum or LSZH jacket).
- Meet all international reliability standards.

Applications

- Local area networks.
- Fast Ethernet.
- Telecommunication networks.
- Fiber channel.
- ATM networks.
- Instrumentation.

Description

High quality Duplex OM2 50/125 multimode fiber patch cord offered in UPC (ultra polish), the cable diameter is 2mm or 3mm, 100% optically inspected, insertion loss testing performed on every assembly.

Available connectors: LC, SC, ST, FC, MU, E2000, MTRJ. AproCables multimode fiber optic patch These patch cords can be used throughout the network in cross-connect, test or equipment areas to link optical equipment. We test every singlemode connector for the exact insertion loss and return loss. These cables are with OM2 50/125 multimode fiber, the cable diameter is 2mm or 3mm.

Duplex multimode 62.5/125 patch cord



Product Code: D6PC

Connector types: LC/APC, ST/APC, FC/APC, L SC/APC

lengths available: 1, 2, 3, 4, 5, 7, 10, 15, 20, 25, 30, 50 or custom lengths.

Description

High quality Duplex OM1 62.5/125 multimode fiber patch cables of diameter 2mm or 3mm are offered in UPC (ultra polished). They are 100% optically inspected and tested for insertion loss on every assembly. Available connectors: LC, SC, ST, FC, MU, E2000, and MTRJ.

AproCables multimode fiber optic patch cords are essential to meet the requirements of today's high-speed data networks. These patch cords can be used throughout the network in cross-connect, test or equipment areas to link optical equipment.

AproCables provides the broadest choice of multimode patch cords to the industry including ST, FC, SC, FDDI, ESCON, LC, MTRJ, E2000 and MU with ultra-polished (UPC). These cables are 62.5/125 multimode fiber, with cable diameter is 2mm or 3mm.

Specifications

- Fiber type: OM1 62.5/125 multimode fibers 850nm, 1310nm or 1550nm
- Low insertion loss (≤ 0.3 dB)
- Pre-radiused, PC-end finish for physical contact
- Repeatability (500 mating cycles): ≤ 0.2 dB
- Tensile strength: ≥ 5 KG
- Exchangeability: ≤ 0.2 dB
- Operation temperature: -20°C to $+70^{\circ}\text{C}$
- Storage temperature: -40°C to $+70^{\circ}\text{C}$
- RoHS compliant
- Standard product made on $\Phi 3.00$ mm PVC jacket (also available in OFNP plenum or LSZH jacket)
- Meet all international reliability standards

Applications

- Local area networks
- Fast Ethernet
- Telecommunication networks
- Fiber channel
- ATM networks
- Instrumentation

Duplex multimode OM3 10G 50/125 patch cord



Product Code: DOM3PC

Connector types:

LC/APC, ST/APC, FC/APC,
SC/APC

Lengths available: 1, 2,
3, 4, 5, 7, 10, 15, 20, 25,
30, 50 or custom lengths.

Description

AproCables provides OM3, laser speed Duplex multimode 50/125um aqua 10G fiber patch cords. They are designed to run advanced application to meet the IEEE 802.3 specification.

LOF 10G fiber patch cords (OM3 10G Fiber patch cord) provide 10 gigabit data transfer speeds in high bandwidth applications 5 times faster than standard 50um fiber cable. It works with both VCSEL laser and LED sources.

OM3 10G laser-optimized optical fiber (LOF) patch cords intended to support high-speed 10-gigabit applications can be used as cross-connect jumpers, equipment and work area cords. We provide OM3, laser speed Duplex MM 50/125um aqua 10G fiber patch cords.

All AproCables LOF patch cords are manufactured using riser grade cable (OFNR) or plenum grade cable (OFNP) and are 100% factory tested for insertion and return loss to ensure transmission performance per ANSI/TIA-568-C.3 standard specifications.

Specifications

- Fiber Type: OM2 50/125 multimode fibers 850nm, 1310nm or 1550nm.
- Low insertion loss (≤ 0.3 dB).
- Pre-radiused, PC-end finish for physical contact.
- Repeatability (500 mating cycles): ≤ 0.2 dB.
- Tensile strength: ≥ 5 KG.
- Exchangeability: ≤ 0.2 dB.
- Operation temperature: -20°C to $+70^{\circ}\text{C}$.
- Storage temperature: -40°C to $+70^{\circ}\text{C}$.
- RoHS compliant.
- Standard product made on $\Phi 3.00$ mm PVC jacket (also available in OFNP plenum or LSZH jacket).
- Meet all international reliability standards.

Applications

- Local area networks.
- Fast Ethernet.
- Telecommunication networks.
- Fiber channel.
- ATM networks.
- Instrumentation.

Multimode OFNP plenum 62.5/125 pigtail



Description

OFNP stands for optical fiber nonconductive plenum. OFNP cables have fire-resistance and low smoke production characteristics. They can be installed in ducts, plenums and other spaces used for building airflow. This is the highest fire rating fiber cable and no other cable types can be used as substitutes.

Product Code: D6PC-P

Connector types:

LC/APC, ST/APC, FC/APC, SC/APC

Lengths available: 1, 2, 3, 4, 5, 7, 10, 15, 20, 25, 30, 50 or custom lengths.

AproCables multimode fiber optic patch cords are essential to meet the requirements of today's high-speed data networks. These patch cords can be used throughout the network in cross-connect, test or equipment areas to link optical equipment. AproCables provides the broadest choice of multimode patch cords to the industry including ST, FC, SC, FDDI, ESCON, LC, MTRJ, E2000 and MU with ultra-polished (UPC). These cables are with 62.5/125 OM1 multimode fiber, of cable diameter 2mm or 3mm.

Specifications

- Fiber type: OM1 62.5/125 multimode fibers 850nm, 1310nm or 1550nm
- Low insertion loss (≤ 0.3 dB) and return loss (> 55 dB)
- Pre-radiused, PC-end finish for physical contact
- Repeatability (500 mating cycles): ≤ 0.2 dB.
- Tensile strength: ≥ 5 KG.
- Exchangeability: ≤ 0.2 dB
- Operation temperature: -20°C to $+70^{\circ}\text{C}$
- Storage temperature: -40°C to $+70^{\circ}\text{C}$
- RoHS compliant
- Standard product made on $\Phi 3.00$ mm OFNP plenum FT6 rated jacket
- Meet all international reliability standards

Applications

- Local area networks
- Fast Ethernet
- Telecommunication networks
- Fiber channel
- ATM networks
- Instrumentation

Simplex multimode 50/125 patch cord



Description

AproCables multimode fiber optic patch cords are essential to meet the requirements of today's high-speed data networks. These patch cords can be used throughout the network in cross-connect, test or equipment areas to link optical equipment with 1 year warranty.

Product Code: S5PC

Connector types:

LC/APC, ST/APC, FC/APC, SC/APC

Lengths available: 1, 2, 3, 4, 5, 7, 10, 15, 20, 25, 30, 50 or custom lengths.

AproCables provides the broadest choice of multimode patch cords to the industry including ST, FC, SC, FDDI, ESCON, LC, E2000 and MU with ultra-polished (UPC).

These cables are with typical 50/125 and 62.5/125 optional multimode fiber, the cable diameter is 2mm or 3mm. Every patch cord supplied by AproCables is guaranteed to be well polished and exceeds the industry standard. We test every connector for the exact insertion loss and return loss.

Specifications

- Fiber Type: 50/125 or 62.5/125 multimode fibers 850nm, 1310nm or 1550nm.
- Low insertion loss (≤ 0.3 dB).
- Pre-radiused, PC-end finish for physical contact.
- Repeatability (500 mating cycles): ≤ 0.2 dB.
- Tensile strength: ≥ 5 KG.
- Exchangeability: ≤ 0.2 dB.
- Operation temperature: -20°C to $+70^{\circ}\text{C}$.
- Storage temperature: -40°C to $+70^{\circ}\text{C}$.
- RoHS compliant.
- Standard product made on $\Phi 3.00$ mm OFNR PVC jacket (also available in OFNP plenum & LSZH jacket).
- Meet all international reliability standards.

Applications

- Local area networks.
- Fast Ethernet.
- Telecommunication networks.
- Fiber channel.
- ATM networks.
- Instrumentation.

Simplex multimode 62.5/125 patch cord



Description

AproCables multimode fiber optic patch cords are essential to meet the requirements of today's high-speed data networks. These patch cords can be used throughout the network in cross-connect, test or equipment areas to link optical equipment.

Product Code: S6PC

Connector types: LC/APC, ST/APC, FC/APC, SC/APC

Lengths available: 1, 2, 3, 4, 5, 7, 10, 15, 20, 25, 30, 50 or custom lengths.

AproCables provides the broadest choice of multimode patch cords to the industry including ST, FC, SC, FDDI, ESCON, LC, E2000 and MU with ultra-polished (UPC). These cables are with typical 62.5/125 multimode fiber, the cable diameter is 2mm or 3mm. Every patch cord supplied by AproCables is guaranteed to be well polished and exceeds the industry standard.

Specifications

- Fiber type: 62.5/125 multimode fibers 850nm, 1310nm or 1550nm
- Low insertion loss (≤ 0.3 dB).
- Pre-radiused, PC-end finish for physical contact.
- Repeatability (500 mating cycles): ≤ 0.2 dB.
- Tensile strength: ≥ 5 KG.
- Exchangeability: ≤ 0.2 dB.
- Operation temperature: -20°C to $+70^{\circ}\text{C}$.
- Storage temperature: -40°C to $+70^{\circ}\text{C}$.
- RoHS compliant.
- Standard product made on $\Phi 3.00$ mm PVC jacket (also available in OFNP plenum or LSZH jacket).
- Meet all international reliability standards.

Applications

- Local area networks.
- Fast Ethernet.
- Telecommunication networks.
- Fiber channel.
- ATM networks.
- Instrumentation.

Simplex multimode OFNP plenum 50/125 patch cord



Product Code: D5PC-P

Connector types: LC/APC, ST/APC, FC/APC, SC/APC

Lengths available: 1, 2, 3, 4, 5, 7, 10, 15, 20, 25, 30, 50 or custom lengths.

Description

OFNP stands for optical fiber nonconductive plenum. OFNP cables have fire-resistance and low smoke production characteristics. They can be installed in ducts, plenums and other spaces used for building airflow. This is the highest fire rating fiber cable and no other cable types can be used as substitutes.

AproCables multimode fiber optic patch cords are essential to meet the requirements of today's high-speed data networks. These patch cords can be used throughout the network in cross-connect, test or equipment areas to link optical equipment with 1 year warranty.

AproCables provides the broadest choice of multimode patch cords to the industry including ST, FC, SC, FDDI, ESCON, LC, MTRJ, E2000 and MU with ultra-polished (UPC). These cables are with OM2 50/125 multimode fiber, the cable diameter is 2mm or 3mm.

Specifications

- Fiber type: OM2 50/125 multimode fibers 850nm,1310nm or 1550nm.
- Low insertion loss (≤ 0.3 dB).
- Pre-radiused, PC-end finish for physical contact.
- Repeatability (500 mating cycles): ≤ 0.2 dB.
- Tensile strength: ≥ 5 KG.
- Exchangeability: ≤ 0.2 dB.
- Operation temperature: -20°C to $+70^{\circ}\text{C}$.
- Storage temperature: -40°C to $+70^{\circ}\text{C}$.
- RoHS compliant.
- Standard product made on $\Phi 3.00$ mm OFNR PVC jacket (also available in OFNP plenum & LSZH jacket).
- Meet all international reliability standards.

Applications

- Local area networks.
- Fast Ethernet.
- Telecommunication networks.
- Fiber channel.
- ATM networks.
- Instrumentation.

Simplex multimode OFNP plenum 62.5/125 patch cord



Product Code: S6PC-P

Connector types:

LC/APC, ST/APC,
FC/APC, SC/APC

Lengths available: 1,
2, 3, 4, 5, 7, 10, 15,
20, 25, 30, 50 or
custom lengths.

Description

OFNP stands for optical fiber nonconductive plenum. OFNP cables have fire-resistance and low smoke production characteristics. They can be installed in ducts, plenums and other spaces used for building airflow. This is the highest fire rating fiber cable and no other cable types can be used as substitutes.

AproCables multimode fiber optic patch cords are essential to meet the requirements of today's high-speed data networks. These patch cords can be used throughout the network in cross-connect, test or equipment areas to link optical equipment.

AproCables provides the broadest choice of multimode patch cords to the industry including ST, FC, SC, FDDI, ESCON, LC, MTRJ, E2000 and MU with Ultra-polished (UPC). These cables are with 62.5/125 OM1 multimode fiber, the cable diameter is 2mm or 3mm.

Specifications

- Fiber type: OM1 62.5/125 multimode fibers 850nm,1310nm or 1550nm.
- Low insertion loss (≤ 0.3 dB).
- Pre-radiused, PC-end finish for physical contact.
- Repeatability (500 mating cycles): ≤ 0.2 dB.
- Tensile strength: ≥ 5 KG.
- Exchangeability: ≤ 0.2 dB.
- Operation temperature: -20°C to $+70^{\circ}\text{C}$.
- Storage temperature: -40°C to $+70^{\circ}\text{C}$.
- RoHS compliant.
- Standard product made on $\Phi 3.00$ mm OFNR PVC jacket (also available in OFNP plenum & LSZH jacket).
- Meet all international reliability standards.

Applications

- Local area networks.
- Fast Ethernet.
- Telecommunication networks.
- Fiber channel.
- ATM networks.
- Instrumentation.

Simplex multimode OFNP plenum OM3 10G patch cord



Description

OFNP stands for optical fiber nonconductive plenum. OFNP cables have fire-resistance and low smoke production characteristics. They can be installed in ducts, plenums and other spaces used for building airflow. This is the highest fire rating fiber cable and no other cable types can be used as substitutes.

Product Code: DOM3PC-P

Connector types:

LC/APC, ST/APC, FC/APC, SC/APC

Lengths available: 1, 2, 3, 4, 5, 7, 10, 15, 20, 25, 30, 50 or custom lengths.

AproCables provides OM3, Laser speed Duplex multimode 50/125um AQUA 10G Fiber patch cords. They are designed to run advanced application to meet the IEEE 802.3 specification. LOF 10G fiber patch cords (OM3 10G fiber patch cord) provide 10 gigabit data transfer speeds in high bandwidth applications 5 times faster than standard 50um fiber cable.

It works with both VCSEL laser and LED sources. OM3 10G laser-optimized optical fiber (LOF) patch cords intended to support high-speed 10-gigabit applications can be used as cross-connect jumpers, equipment and work area cords.

We provide OM3, Laser speed Duplex Multimode 50/125um AQUA 10G Fiber patch cords. All AproCables LOF patch cords are manufactured using riser grade cable (OFNR) or plenum grade cable (OFNP) and are 100% factory tested for insertion and return loss to ensure transmission performance per ANSI/TIA-568-C.3 standard specifications.

Specifications

- Fiber type: 50/125 multimode fibers 850nm, 1310nm or 1550nm
- Low insertion loss (≤ 0.3 dB).
- Pre-radiused, PC-end finish for physical contact.
- Repeatability (500 mating cycles): ≤ 0.2 dB.
- Tensile strength: ≥ 5 KG.
- Exchangeability: ≤ 0.2 dB.
- Operation temperature: -20°C to $+70^{\circ}\text{C}$.
- Storage temperature: -40°C to $+70^{\circ}\text{C}$.
- RoHS compliant.
- Standard product made on $\Phi 3.00$ mm OFNR PVC jacket (also available in OFNP plenum & LSZH jacket).
- Meet all international reliability standards.

Applications

- Local area networks.
- Fast Ethernet.
- Telecommunication networks.
- Fiber channel.
- ATM networks.
- Instrumentation.

Simplex multimode OM3 10G 50/125 patch cord



Product Code: SOM3PC

Connector types:

LC/APC, ST/APC,
FC/APC, SC/APC

Lengths available: 1,
2, 3, 4, 5, 7, 10, 15, 20,
25, 30, 50 or custom
lengths.

Description

AproCables provides OM3, laser speed Simplex multimode 50/125um aqua 10G fiber patch cords. They are designed to run advanced application to meet the IEEE 802.3 specification.

LOF 10G fiber patch cords (OM3 10G fiber patch cord) provide 10 Gigabit data transfer speeds in high bandwidth applications 5 times faster than standard 50um fiber cable. It works with both VCSEL laser and LED sources. OM3 10G laser-optimized optical fiber (LOF) patch cords intended to support high-speed 10-Gigabit applications can be used as cross-connect jumpers, equipment and work area cords. We provide OM3, laser speed Simplex multimode 50/125um aqua 10G fiber patch cords. All Vokplus LOF patch cords are manufactured using riser grade cable (OFNR) or plenum grade cable (OFNP) and are 100% factory tested for insertion and return loss to ensure transmission performance per ANSI/TIA-568-C.3 standard specifications.

Specifications

- Fiber type: 50/125 multimode fibers 850nm, 1310nm or 1550nm.
- Low insertion loss (≤ 0.3 dB).
- Pre-radiused, PC-end finish for physical contact.
- Repeatability (500 mating cycles): ≤ 0.2 dB.
- Tensile strength: ≥ 5 KG.
- Exchangeability: ≤ 0.2 dB.
- Operation temperature: -20°C to $+70^{\circ}\text{C}$.
- Storage temperature: -40°C to $+70^{\circ}\text{C}$.
- RoHS compliant.
- Standard product made on $\Phi 3.00$ mm OFNR PVC jacket (also available in OFNP plenum & LSZH jacket).
- Meet all international reliability standards.

Applications

- Local area networks.
- Fast Ethernet.
- Telecommunication networks.
- Fiber channel.
- ATM networks.
- Instrumentation.

Simplex multimode OFNP plenum 50/125 patch cord



Product Code: S5PC-P

Connector types:

LC/APC, ST/APC,
FC/APC, SC/APC

Lengths available: 1,
2, 3, 4, 5, 7, 10, 15,
20, 25, 30, 50 or
custom lengths.

Description

OFNP stands for optical fiber nonconductive plenum. OFNP cables have fire-resistance and low smoke production characteristics. They can be installed in ducts, plenums and other spaces used for building airflow. This is the highest fire rating fiber cable and no other cable types can be used as substitutes.

AproCables multimode fiber optic patch cords are essential to meet the requirements of today's high-speed data networks. These patch cords can be used throughout the network in cross-connect, test or equipment areas to link optical equipment with 1 year warranty.

AproCables provides the broadest choice of multi mode patch cords to the industry including ST, FC, SC, FDDI, ESCON, LC, MTRJ, E2000 and MU with Ultra-polished (UPC). These cables are with OM2 50/125 multimode fiber, the cable diameter is 2mm or 3mm.

Specifications

- Fiber type: OM2 50/125 multimode fibers 850nm,1310nm or 1550nm.
- Low insertion loss (≤ 0.3 dB).
- Pre-radiused, PC-end finish for physical contact.
- Repeatability (500 mating cycles): ≤ 0.2 dB.
- Tensile strength: ≥ 5 KG.
- Exchangeability: ≤ 0.2 dB.
- Operation temperature: -20°C to $+70^{\circ}\text{C}$.
- Storage temperature: -40°C to $+70^{\circ}\text{C}$.
- RoHS compliant.
- Standard product made on $\Phi 3.00$ mm OFNR PVC jacket (also available in OFNP plenum & LSZH jacket).
- Meet all international reliability standards.

Applications

- Local area networks.
- Fast Ethernet.
- Telecommunication networks.
- Fiber channel.
- ATM networks.
- Instrumentation.

Multimode Fiber Optic Pigtails

Multimode 12 fiber 900u 50/125 pigtail



Product Code: 12C5PT

Connector types: LC/APC, ST/APC, FC/APC, SC/APC

Lengths available: 1, 2, 3, 4, 5, 7, 10, 15, 20, 25, 30, 50 or custom lengths.

Description

AproCables multimode fiber optic pigtails are essential to meet the requirements of today's high-speed data networks. Pigtails are single fiber cables, pre-assembled with a connector at one end. They are typically used to terminate primary coated fiber to optical equipment.

We provide high quality 62.5/125 or 50/125 multimode fiber pigtail offered in UPC (ultra polish), used primarily to splice outside plant cables. Many times there is a need to match the pigtail to the color coded outside plant fiber cable.

AproCables offers a kit of pigtails with 12 fiber color coded buffer based on the standard color code. 100% optically inspected, insertion loss testing performed on every assembly. Available connectors: LC, SC, ST, FC, MU, E2000. Every pigtail supplied by AproCables is guaranteed to be well polished and exceeds the industry standard.

Specifications

- Fiber type: OM1 62.5/125 or OM2 50/125 multimode fibers 850nm, 1310nm or 1550nm.
- Low insertion loss (≤ 0.3 dB).
- Pre-radiused, PC-end finish for physical contact.
- Repeatability (500 mating cycles): ≤ 0.2 dB.
- Tensile strength: ≥ 5 KG.
- Exchangeability: ≤ 0.2 dB.
- Operation temperature: -20°C to $+70^{\circ}\text{C}$.
- Storage temperature: -40°C to $+70^{\circ}\text{C}$.
- RoHS compliant.
- Standard product made on $\Phi 3.00$ mm PVC jacket (also available in OFNP plenum or LSZH jacket).
- Meet all international reliability standards.

Applications

- Local area networks.
- Fast Ethernet.
- Telecommunication networks.
- Fiber channel.
- ATM networks.
- Instrumentation.

Multimode 12 fiber 900u 62.5/125 pigtail



Description

AproCables multimode fiber optic pigtails are essential to meet the requirements of today's high-speed data networks. Pigtails are single fiber cables, pre-assembled with a connector at one end. They are typically used to terminate primary coated fiber to optical equipment.

Product Code: 12C6PT

Connector types:

LC/APC, ST/APC,
FC/APC, SC/APC

We provide high quality 62.5/125 or 50/125 multi mode fiber pigtail offered in UPC (ultra polish), used primarily to splice outside plant cables. Many times there is a need to match the pigtail to the color coded outside plant fiber cable.

Lengths available: 1, 2, 3, 4, 5, 7, 10, 15, 20, 25, 30, 50 or custom lengths.

AproCables offers a kit of pigtails with 12 fiber color coded buffer based on the standard color code. 100% optically inspected, insertion loss testing performed on every assembly. Available connectors: LC, SC, ST, FC, MU, E2000.

Specifications

- Fiber type: OM1 62.5/125 or OM2 50/125 multimode fibers 850nm, 1310nm or 1550nm.
- Low insertion loss (≤ 0.3 dB).
- Pre-radiused, PC-end finish for physical contact.
- Repeatability (500 mating cycles): ≤ 0.2 dB.
- Tensile strength: ≥ 5 KG.
- Exchangeability: ≤ 0.2 dB.
- Operation temperature: -20°C to $+70^{\circ}\text{C}$.
- Storage temperature: -40°C to $+70^{\circ}\text{C}$.
- RoHS compliant.
- Standard product made on $\Phi 3.00$ mm PVC jacket (also available in OFNP plenum or LSZH jacket).
- Meet all international reliability standards.

Applications

- Local area networks.
- Fast Ethernet.
- Telecommunication networks.
- Fiber channel.
- ATM networks.
- Instrumentation.

Multimode 12 fiber 900u OM3 10G pigtail



Product Code: 12COM3PT

Connector types: LC/APC, ST/APC, FC/APC, SC/APC

Lengths available: 1, 2, 3, 4, 5, 7, 10, 15, 20, 25, 30, 50 or custom lengths.

Description

AproCables OM3 10G 900 μ m fiber optic pigtails are essential to meet the requirements of today's high-speed data networks. Pigtails are single fiber cables, pre-assembled with a connector at one end. They are typically used to terminate primary coated fiber to optical equipment.

AproCables provides OM3, laser speed multimode 50/125 μ m 10G 900 μ m fiber pigtail. They are designed to run advanced application to meet the IEEE 802.3 specification. LOF 10G fiber pigtail provide 10 gigabit data transfer speeds in high bandwidth applications 5 times faster than standard 50 μ m fiber cable. It works with both VCSEL laser and LED sources.

We provide OM3, laser speed multimode 50/125 μ m 900 μ m 10G fiber pigtails used primarily to splice outside plant cables. Many times there is a need to match the pigtail to the color coded outside plant fiber cable. AproCables offers a kit of pigtails with 12 fiber color coded buffer based on the standard color code. Available connectors: LC, SC, ST, FC, MU, E2000.

Specifications

- Fiber type: OM1 62.5/125 or OM2 50/125 multimode fibers 850nm, 1310nm or 1550nm.
- Low insertion loss (≤ 0.3 dB).
- Pre-radiused, PC-end finish for physical contact.
- Repeatability (500 mating cycles): ≤ 0.2 dB.
- Tensile strength: ≥ 5 KG.
- Exchangeability: ≤ 0.2 dB.
- Operation temperature: -20°C to $+70^{\circ}\text{C}$.
- Storage temperature: -40°C to $+70^{\circ}\text{C}$.
- RoHS compliant.
- Meet all international reliability standards.

Applications

- Local area networks.
- Fast Ethernet.
- Telecommunication networks.
- Fiber channel.
- ATM networks.
- Instrumentation.

Multimode 3.0 62.5/125 pigtail



Description

AproCables multimode fiber optic pigtails are essential to meet the requirements of today's high-speed data networks. Pigtails are single fiber cables, pre-assembled with a connector at one end. They are typically used to terminate primary coated fiber to optical equipment.

Product Code: S6PT

Connector types: LC/APC, ST/APC, FC/APC, SC/APC

Lengths available: 1, 2, 3, 4, 5, 7, 10, 15, 20, 25, 30, 50 or custom lengths.

We provide high quality 62.5/125 or 50/125 single mode fiber pigtail in UPC (ultra polish).100% optically inspected, insertion loss testing performed on every assembly. Available connectors: LC, SC, ST, FC, MU, E2000.

With our state-of art testing equipment, refined polishing machine, advanced polishing procedure and a group of experienced technicians, we make reliable and top quality pigtails at an affordable price. Every pigtail supplied by AproCables is guaranteed to be well polished and exceeds the industry standard.

Specifications

- Fiber type: OM1 62.5/125 multimode fibers 850nm, 1310nm or 1550nm.
- Low insertion loss (≤ 0.3 dB).
- Pre-radiused, PC-end finish for physical contact.
- Repeatability (500 mating cycles): ≤ 0.2 dB.
- Tensile strength: ≥ 5 KG.
- Exchangeability: ≤ 0.2 dB.
- Operation temperature: -20°C to $+70^{\circ}\text{C}$.
- Storage temperature: -40°C to $+70^{\circ}\text{C}$.
- RoHS compliant.
- Standard product made on $\Phi 3.00$ mm PVC jacket (also available in OFNP plenum or LSZH jacket).
- Meet all international reliability standards.

Applications

- Local area networks.
- Fast Ethernet.
- Telecommunication networks.
- Fiber channel.
- ATM networks.
- Instrumentation.

Multimode 3.0 OM3 pigtail



Product Code: S6PC

Connector types:

LC/APC, ST/APC, FC/APC,
SC/APC

Lengths available: 1, 2,
3, 4, 5, 7, 10, 15, 20, 25,
30, 50 or custom lengths.

Description

AproCables provides OM3, laser speed Simplex multimode 50/125um AQUA 10G fiber patch cords. They are designed to run advanced application to meet the IEEE 802.3 specification.

LOF 10G fiber patch cords (OM3 10G Fiber patch cord) provide 10 gigabit data transfer speeds in high bandwidth applications 5 times faster than standard 50um fiber cable. It works with both VCSEL laser and LED sources. OM3 10G laser-optimized optical fiber (LOF) patch cords intended to support high-speed 10-gigabit applications can be used as cross-connect jumpers, equipment and work area cords.

We provide OM3, laser speed Simplex multimode 50/125um AQUA 10G fiber patch cords. All AproCables LOF patch cords are manufactured using riser grade cable (OFNR) or plenum grade cable (OFNP).

Specifications

- Fiber type: 50/125 multimode fibers 850nm,1310nm or 1550nm.
- Low insertion loss (≤ 0.3 dB).
- Pre-radiused, PC-end finish for physical contact.
- Repeatability (500 mating cycles): ≤ 0.2 dB.
- Tensile strength: ≥ 5 KG.
- Exchangeability: ≤ 0.2 dB.
- Operation temperature: -20°C to $+70^{\circ}\text{C}$.
- Storage temperature: -40°C to $+70^{\circ}\text{C}$.
- RoHS compliant.
- Standard product made on $\Phi 3.00$ mm OFNR PVC jacket (also available in OFNP plenum & LSZH jacket).
- Meet all international reliability standards.

Applications

- Local area networks.
- Fast Ethernet.
- Telecommunication networks.
- Fiber channel.
- ATM networks.
- Instrumentation.

OFNP multimode plenum 50/125 pigtail



Product Code: S5PT-P

Connector types:

LC/APC, ST/APC, FC/APC,
SC/APC

Lengths available: 1, 2,
3, 4, 5, 7, 10, 15, 20, 25,
30, 50 or custom lengths.

Description

OFNP stands for optical fiber nonconductive plenum. OFNP cables have fire-resistance and low smoke production characteristics. They can be installed in ducts, plenums and other spaces used for building airflow. This is the highest fire rating fiber cable and no other cable types can be used as substitutes. AproCables multimode fiber optic pigtails are essential to meet the requirements of today's high-speed data networks.

Pigtails are Simplex fiber cables, pre-assembled with a connector at one end. They are typically used to terminate primary coated fiber to optical equipment. We provide high quality 62.5/125 or 50/125 singlemode fiber pigtail in UPC (Ultra Polish).100% optically inspected, insertion loss testing performed on every assembly. Available connectors: LC, SC, ST, FC, MU, E2000.

Specifications

- Fiber type: OM1 62.5/125 multimode fibers 850nm, 1310nm or 1550nm.
- Low insertion loss (≤ 0.3 dB).
- Pre-radiused, PC-end finish for physical contact.
- Repeatability (500 mating cycles): ≤ 0.2 dB.
- Tensile strength: ≥ 5 KG.
- Exchangeability: ≤ 0.2 dB.
- Operation temperature: -20°C to $+70^{\circ}\text{C}$.
- Storage temperature: -40°C to $+70^{\circ}\text{C}$.
- RoHS compliant.
- Standard product made on $\Phi 3.00$ mm OFNP plenum FT6 rated jacket.
- Meet all international reliability standards.

Applications

- Local area networks.
- Fast Ethernet.
- Telecommunication networks.
- Fiber channel.
- ATM networks.
- Instrumentation.

OFNP multimode plenum 62.5/125 pigtail



Description

OFNP stands for optical fiber nonconductive plenum. OFNP cables have fire-resistance and low smoke production characteristics. They can be installed in ducts, plenums and other spaces used for building airflow. This is the highest fire rating fiber cable and no other cable types can be used as substitutes.

Product Code: S6PT-P

Connector types:

LC/APC, ST/APC, FC/APC, SC/APC

Lengths available: 1, 2, 3, 4, 5, 7, 10, 15, 20, 25, 30, 50 or custom lengths.

AproCables multimode fiber optic pigtails are essential to meet the requirements of today's high-speed data networks. Pigtails are Simplex fiber cables, pre-assembled with a connector at one end. They are typically used to terminate primary coated fiber to optical equipment.

We provide high quality 62.5/125 or 50/125 singlemode fiber pigtail in UPC (Ultra Polish). 100% optically inspected, insertion loss testing performed on every assembly. Available connectors: LC, SC, ST, FC, MU, E2000.

Specifications

- Fiber type: OM1 62.5/125 multimode fibers 850nm, 1310nm or 1550nm.
- Low insertion loss (≤ 0.3 dB).
- Pre-radiused, PC-end finish for physical contact.
- Repeatability (500 mating cycles): ≤ 0.2 dB.
- Tensile strength: ≥ 5 KG.
- Exchangeability: ≤ 0.2 dB.
- Operation temperature: -20°C to $+70^{\circ}\text{C}$.
- Storage temperature: -40°C to $+70^{\circ}\text{C}$.
- RoHS compliant.
- Standard product made on $\Phi 3.00$ mm OFNP plenum FT6 rated jacket.
- Meet all international reliability standards.

Applications

- Local area networks.
- Fast Ethernet.
- Telecommunication networks.
- Fiber channel.
- ATM networks.
- Instrumentation.

OFNP plenum OM3 10G pigtail



Description

OFNP stands for optical fiber nonconductive plenum and these cables are fire-resistant and have low smoke production features. OFNP cables can be installed in ducts, plenums and other spaces used for building airflow. This is the highest fire rating fiber cable and no other cable types can be used as substitutes.

Product Code: SOM3PT-P

Connector types: LC/APC, ST/APC, FC/APC, SC/APC

Lengths available: 1, 2, 3, 4, 5, 7, 10, 15, 20, 25, 30, 50 or custom lengths.

OM3 stands for laser-optimized 50/125um multimode fiber and is used for systems with high bandwidth requirements such as 10 Gigabit Ethernet using lasers as transmitters. The OM3 fibers are ideal for both new VCSEL based hardware and slower legacy LEDs in systems. Fiber optic pigtails are typically used to link fiber optic cables with fiber optic equipment.

The connector part of the pigtail is used to link the equipment, while the other side is melted together with the fiber cable and can reach a minimum insertion loss. AproCables multimode fiber optic pigtails are essential to meet the requirements of today's high-speed data networks. They come with a 1 year warranty.

Multimode Fiber Optic Trunk Cables

Multimode 50/125 MPO male to MPO male



Product Code: MPO002

Connector types: LC/APC, ST/APC, FC/APC, SC/APC

Lengths available: 1, 2, 3, 4, 5, 7, 10, 15, 20, 25, 30, 50 or custom lengths.

Description

The MTP® MPO cabling system is ideally suited for a high density environment that demands space saving cable density and innovative cable management solutions. Simply install the MTP® MPO trunk cable within the building and connect to the rear of a MTP® MPO patch panel or ruggedised fan-Out.

Multimode 50/125 OM3 10G MPO male to MPO male



Product Code: MPO003

Connector types: LC/APC, ST/APC, FC/APC, SC/APC

Lengths available: 1, 2, 3, 4, 5, 7, 10, 15, 20, 25, 30, 50 or custom lengths.

Description

The MTP® MPO cabling system is ideally suited for a high density environment that demands space saving cable density and innovative cable management solutions. Simply install the MTP® MPO trunk cable within the building and connect to the rear of a MTP® MPO patch panel or ruggedized fan-Out.

Connectors

FC Connectors

FC 0.9 APC connector kit (100 pcs)



Product Code: CT-FC-APC-0.9

Description

A FC connector is a fiber connector with a threaded body, which was designed for use in high-vibration environments. FC fiber optic connectors are widely used in equipment and cable assemblies, especially on test equipment interfaces. FC is the most widely used connector in today's applications.

FC is designed with a cylindrical metal coupling nut with keyed sleeves; it is used in long haul and local network connections. FC fiber optic connectors use 2.5mm ceramic ferrule or stainless steel metal ferrules, and the FC ferrule has a pull-proof mechanism for durability.

The FC connector has been standardized in a FOCIS 4 (Fiber Optic Connector Intermateability Standards) in EIA/TIA-604-04. FC connectors have excellent compatibility standards for use in telecommunications, CATV, LAN, WAN, medical, test and measurement environments.

FC connector applications

- LANs & WANs
- CATV
- Metro
- Test equipment
- Telecommunication & data processing networks.
- Premise installations.
- Industrial & military

FC connector specifications

ST connectors	Singlemode	Multimode
Insertion Loss	≤0.20dB	≤0.25dB
Return Loss	≥50dB(PC)	N/A
	≥55dB(UPC)	N/A
	≥65dB(APC)	N/A
Durability	≤0.20dB typical change after 1000 mating	
Operating Temperature	-40 to +80°C	

ProCables FC fiber optic connector versions

There are three types FC fiber connectors: single mode FC UPC FC fiber connector, single mode FC APC fiber connector and multimode FC UPC fiber connectors. UPC type connector boot usually is black color, APC boot is green color.

FC 0.9 MM connector kit (100 pcs)



Product Code: CT-FC-MM-0.9

Description

A FC connector is a fiber connector with a threaded body, which was designed for use in high-vibration environments. FC fiber optic connectors are widely used in equipment and cable assemblies, especially on test equipment interfaces. FC is the most widely used connector in today's applications.

FC is designed with a cylindrical metal coupling nut with keyed sleeves; it is used in long haul and local network connections. FC fiber optic connectors use 2.5mm ceramic ferrule or stainless steel metal ferrules, and the FC ferrule has a pull-proof mechanism for durability.

The FC connector has been standardized in a FOCIS 4 (Fiber Optic Connector Intermateability Standards) in EIA/TIA-604-04. FC connectors have excellent compatibility standards for use in telecommunications, CATV, LAN, WAN, medical, test and measurement environments.

FC connector applications

- LANs & WANs
- CATV
- Metro
- Test equipment
- Telecommunication & data processing networks.
- Premise installations.
- Industrial & military

FC connector specifications

ST connectors	Singlemode	Multimode
Insertion Loss	≤0.20dB	≤0.25dB
Return Loss	≥50dB(PC)	N/A
	≥55dB(UPC)	N/A
	≥65dB(APC)	N/A
Durability	≤0.20dB typical change after 1000 mating	
Operating Temperature	-40 to +80°C	

ProCables FC fiber optic connector versions

There are three types FC fiber connectors: single mode FC UPC FC fiber connector, single mode FC APC fiber connector and multimode FC UPC fiber connectors. UPC type connector boot usually is black color, APC boot is green color.

FC 0.9 SM connector kit (100 pcs)



Product Code: CT-FC-SM-0.9

Description

A FC connector is a fiber connector with a threaded body, which was designed for use in high-vibration environments. FC fiber optic connectors are widely used in equipment and cable assemblies, especially on test equipment interfaces. FC is the most widely used connector in today's applications.

FC is designed with a cylindrical metal coupling nut with keyed sleeves; it is used in long haul and local network connections. FC fiber optic connectors use 2.5mm ceramic ferrule or stainless steel metal ferrules, and the FC ferrule has a pull-proof mechanism for durability.

The FC connector has been standardized in a FOCIS 4 (Fiber Optic Connector Intermateability Standards) in EIA/TIA-604-04. FC connectors have excellent compatibility standards for use in telecommunications, CATV, LAN, WAN, medical, test and measurement environments.

FC connector applications

- LANs & WANs
- CATV
- Metro
- Test equipment
- Telecommunication & data processing networks.
- Premise installations.
- Industrial & military

FC connector specifications

ST connectors	Singlemode	Multimode
Insertion Loss	≤0.20dB	≤0.25dB
Return Loss	≥50dB(PC)	N/A
	≥55dB(UPC)	N/A
	≥65dB(APC)	N/A
Durability	≤0.20dB typical change after 1000 mating	
Operating Temperature	-40 to +80°C	

ProCables FC fiber optic connector versions

There are three types FC fiber connectors: single mode FC UPC FC fiber connector, single mode FC APC fiber connector and multimode FC UPC fiber connectors. UPC type connector boot usually is black color, APC boot is green color.

FC 2.0 APC connector kit (100 pcs)



Description

A FC connector is a fiber connector with a threaded body, which was designed for use in high-vibration environments. FC fiber optic connectors are widely used in equipment and cable assemblies, especially on test equipment interfaces. FC is the most widely used connector in today's applications. FC is designed with a cylindrical metal coupling nut with keyed sleeves; it is used in long haul and local network connections.

Product Code: CT-FC-APC-2

FC fiber optic connectors use 2.5mm ceramic ferrule or stainless steel metal ferrules, and the FC ferrule has a pull-proof mechanism for durability. The FC connector has been standardized in a FOCIS 4 (Fiber Optic Connector Intermateability Standards) in EIA/TIA-604-04. FC connectors have excellent compatibility standards for use in telecommunications, CATV, LAN, WAN, medical, test and measurement environments.

FC connector applications

- LANs & WANs
- CATV
- Metro
- Test equipment
- Telecommunication & data processing networks.
- Premise installations.
- Industrial & military

FC connector specifications

ST connectors	Singlemode	Multimode
Insertion Loss	≤0.20dB	≤0.25dB
Return Loss	≥50dB(PC)	N/A
	≥55dB(UPC)	N/A
	≥65dB(APC)	N/A
Durability	≤0.20dB typical change after 1000 mating	
Operating Temperature	-40 to +80°C	

ProCables FC fiber optic connector versions

There are three types FC fiber connectors: single mode FC UPC FC fiber connector, single mode FC APC fiber connector and multimode FC UPC fiber connectors. UPC type connector boot usually is black color, APC boot is green color.

FC 2.0 MM connector kit (100 pcs)



Description

A FC connector is a fiber connector with a threaded body, which was designed for use in high-vibration environments. FC fiber optic connectors are widely used in equipment and cable assemblies, especially on test equipment interfaces. FC is the most widely used connector in today's applications.

Product Code: CT-FC-MM-2

FC is designed with a cylindrical metal coupling nut with keyed sleeves; it is used in long haul and local network connections. FC fiber optic connectors use 2.5mm ceramic ferrule or stainless steel metal ferrules, and the FC ferrule has a pull-proof mechanism for durability.

The FC connector has been standardized in a FOCIS 4 (Fiber Optic Connector Intermateability Standards) in EIA/TIA-604-04. FC connectors have excellent compatibility standards for use in telecommunications, CATV, LAN, WAN, medical, test and measurement environments.

FC connector applications

- LANs & WANs
- CATV
- Metro
- Test equipment
- Telecommunication & data processing networks.
- Premise installations.
- Industrial & military

FC connector specifications

ST connectors	Singlemode	Multimode
Insertion Loss	≤0.20dB	≤0.25dB
Return Loss	≥50dB(PC)	N/A
	≥55dB(UPC)	N/A
	≥65dB(APC)	N/A
Durability	≤0.20dB typical change after 1000 mating	
Operating Temperature	-40 to +80°C	

ProCables FC fiber optic connector versions

There are three types FC fiber connectors: single mode FC UPC FC fiber connector, single mode FC APC fiber connector and multimode FC UPC fiber connectors. UPC type connector boot usually is black color, APC boot is green color.

FC 2.0 SM connector kit (100 pcs)



Description

A FC connector is a fiber connector with a threaded body, which was designed for use in high-vibration environments. FC fiber optic connectors are widely used in equipment and cable assemblies, especially on test equipment interfaces. FC is the most widely used connector in today's applications.

Product Code: CT-FC-SM-2

FC is designed with a cylindrical metal coupling nut with keyed sleeves; it is used in long haul and local network connections. FC fiber optic connectors use 2.5mm ceramic ferrule or stainless steel metal ferrules, and the FC ferrule has a pull-proof mechanism for durability.

The FC connector has been standardized in a FOCIS 4 (Fiber Optic Connector Intermateability Standards) in EIA/TIA-604-04. FC connectors have excellent compatibility standards for use in telecommunications, CATV, LAN, WAN, medical, test and measurement environments.

FC connector applications

- LANs & WANs
- CATV
- Metro
- Test equipment
- Telecommunication & data processing networks.
- Premise installations.
- Industrial & military

FC connector specifications

ST connectors	Singlemode	Multimode
Insertion Loss	≤0.20dB	≤0.25dB
Return Loss	≥50dB(PC)	N/A
	≥55dB(UPC)	N/A
	≥65dB(APC)	N/A
Durability	≤0.20dB typical change after 1000 mating	
Operating Temperature	-40 to +80°C	

ProCables FC fiber optic connector versions

There are three types FC fiber connectors: single mode FC UPC FC fiber connector, single mode FC APC fiber connector and multimode FC UPC fiber connectors. UPC type connector boot usually is black color, APC boot is green color.

FC 3.0 APC connector kit (100 pcs)



Product Code: CT-FC-APC-3

Description

A FC connector is a fiber connector with a threaded body, which was designed for use in high-vibration environments. FC fiber optic connectors are widely used in equipment and cable assemblies, especially on test equipment interfaces. FC is the most widely used connector in today's applications.

FC is designed with a cylindrical metal coupling nut with keyed sleeves; it is used in long haul and local network connections. FC fiber optic connectors use 2.5mm ceramic ferrule or stainless steel metal ferrules, and the FC ferrule has a pull-proof mechanism for durability.

The FC connector has been standardized in a FOCIS 4 (Fiber Optic Connector Intermateability Standards) in EIA/TIA-604-04. FC connectors have excellent compatibility standards for use in telecommunications, CATV, LAN, WAN, medical, test and measurement environments.

FC connector applications

- LANs & WANs
- CATV
- Metro
- Test equipment
- Telecommunication & data processing networks.
- Premise installations.
- Industrial & military

FC connector specifications

ST connectors	Singlemode	Multimode
Insertion Loss	≤0.20dB	≤0.25dB
Return Loss	≥50dB(PC)	N/A
	≥55dB(UPC)	N/A
	≥65dB(APC)	N/A
Durability	≤0.20dB typical change after 1000 mating	
Operating Temperature	-40 to +80°C	

ProCables FC fiber optic connector versions

There are three types FC fiber connectors: single mode FC UPC FC fiber connector, single mode FC APC fiber connector and multimode FC UPC fiber connectors. UPC type connector boot usually is black color, APC boot is green color.

FC 3.0 MM connector kit (100 pcs)



Description

A FC connector is a fiber connector with a threaded body, which was designed for use in high-vibration environments. FC fiber optic connectors are widely used in equipment and cable assemblies, especially on test equipment interfaces. FC is the most widely used connector in today's applications.

Product Code: CT-FC-MM-3

FC is designed with a cylindrical metal coupling nut with keyed sleeves; it is used in long haul and local network connections. FC fiber optic connectors use 2.5mm ceramic ferrule or stainless steel metal ferrules, and the FC ferrule has a pull-proof mechanism for durability.

The FC connector has been standardized in a FOCIS 4 (Fiber Optic Connector Intermateability Standards) in EIA/TIA-604-04. FC connectors have excellent compatibility standards for use in telecommunications, CATV, LAN, WAN, medical, test and measurement environments.

FC connector applications

- LANs & WANs
- CATV
- Metro
- Test equipment
- Telecommunication & data processing networks.
- Premise installations.
- Industrial & military

FC connector specifications

ST connectors	Singlemode	Multimode
Insertion Loss	≤0.20dB	≤0.25dB
Return Loss	≥50dB(PC)	N/A
	≥55dB(UPC)	N/A
	≥65dB(APC)	N/A
Durability	≤0.20dB typical change after 1000 mating	
Operating Temperature	-40 to +80°C	

ProCables FC fiber optic connector versions

There are three types FC fiber connectors: single mode FC UPC FC fiber connector, single mode FC APC fiber connector and multimode FC UPC fiber connectors. UPC type connector boot usually is black color, APC boot is green color.

FC 3.0 SM connector kit (100 pcs)



Description

A FC connector is a fiber connector with a threaded body, which was designed for use in high-vibration environments. FC fiber optic connectors are widely used in equipment and cable assemblies, especially on test equipment interfaces. FC is the most widely used connector in today's applications.

Product Code: CT-FC-SM-3

FC is designed with a cylindrical metal coupling nut with keyed sleeves; it is used in long haul and local network connections. FC fiber optic connectors use 2.5mm ceramic ferrule or stainless steel metal ferrules, and the FC ferrule has a pull-proof mechanism for durability.

The FC connector has been standardized in a FOCIS 4 (Fiber Optic Connector Intermateability Standards) in EIA/TIA-604-04. FC connectors have excellent compatibility standards for use in telecommunications, CATV, LAN, WAN, medical, test and measurement environments.

FC connector applications

- LANs & WANs
- CATV
- Metro
- Test equipment
- Telecommunication & data processing networks.
- Premise installations.
- Industrial & military

FC connector specifications

ST connectors	Singlemode	Multimode
Insertion Loss	≤0.20dB	≤0.25dB
Return Loss	≥50dB(PC)	N/A
	≥55dB(UPC)	N/A
	≥65dB(APC)	N/A
Durability	≤0.20dB typical change after 1000 mating	
Operating Temperature	-40 to +80°C	

ProCables FC fiber optic connector versions

There are three types FC fiber connectors: single mode FC UPC FC fiber connector, single mode FC APC fiber connector and multimode FC UPC fiber connectors. UPC type connector boot usually is black color, APC boot is green color.

LC Connectors

LC 0.9 APC connector kit (100 pcs)



Product Code: CT-LC-APC-0.9

Description

The LC is a small form factor (SFF) connector and is ideal for high density applications. LC is about half size of an SC connector and LC uses a 1.25mm ferrule which is half the dimension of a SC ferrule. The LC connector makes use of an enhanced edition of the well-known, user-friendly RJ-style connector that offers a reassuring, clear click when connected.

The latest, single-set design improves the connector's strength and complies with side-load requirements of standard 2.5 mm connectors. Jumper LC connectors are equipped with detachable clips making it easier to rectify polarity inaccuracies during termination. The distinctive mixture of small size and the click of connectivity make the LC connector a perfect pick for today's high performance networks.

LC connector features

- Compact, pull-proof design
- RJ-45 style interface, half the dimension of a regular connector
- Push & pull mechanism like RJ connectors
- Detachable clips for simplex as well as duplex connectors
- Polarized and color coded
- UL-rated plastic housing and boots in green, blue, aqua and beige colors
- Low insertion loss and low back reflection

LC connector specifications

LC connectors	Singlemode	Multimode
Insertion Loss	≤0.20dB	≤0.25dB
Return Loss	≥50dB(PC)	N/A
	≥55dB(UPC)	N/A
	≥65dB(APC)	N/A
Durability	≤0.20dB typical change after 1000 mating	
Operating Temperature	-40 to +80°C	

ProCables LC connector kit versions

LC connectors and related products have both single mode and multimode types. The LC connector family includes single mode LC UPC connector, single mode LC APC connector and multimode LC UPC connector. There are simplex LC connectors and duplex types.

We supply various kinds of LC fiber optic connectors, adapters, attenuators and cable assemblies. These products are compliant to TIA /EIA and IEC standard. They are suitable for use in Gigabit Ethernet, multimedia, industrial and military applications.

LC 0.9 MM connector kit (100 pcs)



Product Code: CT-LC-MM-0.9

Description

The LC is a small form factor (SFF) connector and is ideal for high density applications. LC is about half size of an SC connector and LC uses a 1.25mm ferrule which is half the dimension of a SC ferrule. The LC connector makes use of an enhanced edition of the well-known, user-friendly RJ-style connector that offers a reassuring, clear click when connected.

The latest, single-set design improves the connector's strength and complies with side-load requirements of standard 2.5 mm connectors. Jumper LC connectors are equipped with detachable clips making it easier to rectify polarity inaccuracies during termination. The distinctive mixture of small size and the click of connectivity make the LC connector a perfect pick for today's high performance networks.

LC connector features

- Compact, pull-proof design
- RJ-45 style interface, half the dimension of a regular connector
- Push & pull mechanism like RJ connectors
- Detachable clips for simplex as well as duplex connectors
- Polarized and color coded
- UL-rated plastic housing and boots in green, blue, aqua and beige colors
- Low insertion loss and low back reflection

LC connector specifications

LC connectors	Singlemode	Multimode
Insertion Loss	≤0.20dB	≤0.25dB
Return Loss	≥50dB(PC)	N/A
	≥55dB(UPC)	N/A
	≥65dB(APC)	N/A
Durability	≤0.20dB typical change after 1000 mating	
Operating Temperature	-40 to +80°C	

ProCables LC connector kit versions

LC connectors and related products have both single mode and multimode types. The LC connector family includes single mode LC UPC connector, single mode LC APC connector and multimode LC UPC connector. There are simplex LC connectors and duplex types.

We supply various kinds of LC fiber optic connectors, adapters, attenuators and cable assemblies. These products are compliant to TIA /EIA and IEC standard. They are suitable for use in Gigabit Ethernet, multimedia, industrial and military applications.

LC 0.9 SM connector kit (100 pcs)



Product Code: CT-LC-SM-0.9

Description

The LC is a small form factor (SFF) connector and is ideal for high density applications. LC is about half size of an SC connector and LC uses a 1.25mm ferrule which is half the dimension of a SC ferrule. The LC connector makes use of an enhanced edition of the well-known, user-friendly RJ-style connector that offers a reassuring, clear click when connected.

The latest, single-set design improves the connector's strength and complies with side-load requirements of standard 2.5 mm connectors. Jumper LC connectors are equipped with detachable clips making it easier to rectify polarity inaccuracies during termination. The distinctive mixture of small size and the click of connectivity make the LC connector a perfect pick for today's high performance networks.

LC connector features

- Compact, pull-proof design
- RJ-45 style interface, half the dimension of a regular connector
- Push & pull mechanism like RJ connectors
- Detachable clips for simplex as well as duplex connectors
- Polarized and color coded
- UL-rated plastic housing and boots in green, blue, aqua and beige colors
- Low insertion loss and low back reflection

LC connector specifications

LC connectors	Singlemode	Multimode
Insertion Loss	≤0.20dB	≤0.25dB
Return Loss	≥50dB(PC)	N/A
	≥55dB(UPC)	N/A
	≥65dB(APC)	N/A
Durability	≤0.20dB typical change after 1000 mating	
Operating Temperature	-40 to +80°C	

ProCables LC connector kit versions

LC connectors and related products have both single mode and multimode types. The LC connector family includes single mode LC UPC connector, single mode LC APC connector and multimode LC UPC connector. There are simplex LC connectors and duplex types.

We supply various kinds of LC fiber optic connectors, adapters, attenuators and cable assemblies. These products are compliant to TIA /EIA and IEC standard. They are suitable for use in Gigabit Ethernet, multimedia, industrial and military applications.

LC 2.0 APC connector kit (100 pcs)



Product Code: CT-LC-APC-2

Description

The LC is a small form factor (SFF) connector and is ideal for high density applications. LC is about half size of an SC connector and LC uses a 1.25mm ferrule which is half the dimension of a SC ferrule. The LC connector makes use of an enhanced edition of the well-known, user-friendly RJ-style connector that offers a reassuring, clear click when connected.

The latest, single-set design improves the connector's strength and complies with side-load requirements of standard 2.5 mm connectors. Jumper LC connectors are equipped with detachable clips making it easier to rectify polarity inaccuracies during termination. The distinctive mixture of small size and the click of connectivity make the LC connector a perfect pick for today's high performance networks.

LC connector features

- Compact, pull-proof design
- RJ-45 style interface, half the dimension of a regular connector
- Push & pull mechanism like RJ connectors
- Detachable clips for simplex as well as duplex connectors
- Polarized and color coded
- UL-rated plastic housing and boots in green, blue, aqua and beige colors
- Low insertion loss and low back reflection

LC connector specifications

LC connectors	Singlemode	Multimode
Insertion Loss	≤0.20dB	≤0.25dB
Return Loss	≥50dB(PC)	N/A
	≥55dB(UPC)	N/A
	≥65dB(APC)	N/A
Durability	≤0.20dB typical change after 1000 mating	
Operating Temperature	-40 to +80°C	

ProCables LC connector kit versions

LC connectors and related products have both single mode and multimode types. The LC connector family includes single mode LC UPC connector, single mode LC APC connector and multimode LC UPC connector. There are simplex LC connectors and duplex types. We supply various kinds of LC fiber optic connectors, adapters, attenuators and cable assemblies. These products are compliant to TIA /EIA and IEC standard. They are suitable for use in Gigabit Ethernet, multimedia, industrial and military applications.

LC 2.0 MM connector kit (100 pcs)



Product Code: CT-LC-MM-2

Description

The LC is a small form factor (SFF) connector and is ideal for high density applications. LC is about half size of an SC connector and LC uses a 1.25mm ferrule which is half the dimension of a SC ferrule. The LC connector makes use of an enhanced edition of the well-known, user-friendly RJ-style connector that offers a reassuring, clear click when connected.

The latest, single-set design improves the connector's strength and complies with side-load requirements of standard 2.5 mm connectors. Jumper LC connectors are equipped with detachable clips making it easier to rectify polarity inaccuracies during termination. The distinctive mixture of small size and the click of connectivity make the LC connector a perfect pick for today's high performance networks.

LC connector features

- Compact, pull-proof design
- RJ-45 style interface, half the dimension of a regular connector
- Push & pull mechanism like RJ connectors
- Detachable clips for simplex as well as duplex connectors
- Polarized and color coded
- UL-rated plastic housing and boots in green, blue, aqua and beige colors
- Low insertion loss and low back reflection

LC connector specifications

LC connectors	Singlemode	Multimode
Insertion Loss	≤0.20dB	≤0.25dB
Return Loss	≥50dB(PC)	N/A
	≥55dB(UPC)	N/A
	≥65dB(APC)	N/A
Durability	≤0.20dB typical change after 1000 mating	
Operating Temperature	-40 to +80°C	

ProCables LC connector kit versions

LC connectors and related products have both single mode and multimode types. The LC connector family includes single mode LC UPC connector, single mode LC APC connector and multimode LC UPC connector. There are simplex LC connectors and duplex types.

We supply various kinds of LC fiber optic connectors, adapters, attenuators and cable assemblies. These products are compliant to TIA /EIA and IEC standard. They are suitable for use in Gigabit Ethernet, multimedia, industrial and military applications.

LC 2.0 SM connector kit (100 pcs)



Product Code: CT-LC-SM-2

Description

The LC is a small form factor (SFF) connector and is ideal for high density applications. LC is about half size of an SC connector and LC uses a 1.25mm ferrule which is half the dimension of a SC ferrule. The LC connector makes use of an enhanced edition of the well-known, user-friendly RJ-style connector that offers a reassuring, clear click when connected.

The latest, single-set design improves the connector's strength and complies with side-load requirements of standard 2.5 mm connectors. Jumper LC connectors are equipped with detachable clips making it easier to rectify polarity inaccuracies during termination. The distinctive mixture of small size and the click of connectivity make the LC connector a perfect pick for today's high performance networks.

LC connector features

- Compact, pull-proof design
- RJ-45 style interface, half the dimension of a regular connector
- Push & pull mechanism like RJ connectors
- Detachable clips for simplex as well as duplex connectors
- Polarized and color coded
- UL-rated plastic housing and boots in green, blue, aqua and beige colors
- Low insertion loss and low back reflection

LC connector specifications

LC connectors	Singlemode	Multimode
Insertion Loss	≤0.20dB	≤0.25dB
Return Loss	≥50dB(PC)	N/A
	≥55dB(UPC)	N/A
	≥65dB(APC)	N/A
Durability	≤0.20dB typical change after 1000 mating	
Operating Temperature	-40 to +80°C	

ProCables LC connector kit versions

LC connectors and related products have both single mode and multimode types. The LC connector family includes single mode LC UPC connector, single mode LC APC connector and multimode LC UPC connector. There are simplex LC connectors and duplex types.

We supply various kinds of LC fiber optic connectors, adapters, attenuators and cable assemblies. These products are compliant to TIA /EIA and IEC standard. They are suitable for use in Gigabit Ethernet, multimedia, industrial and military applications.

LC 3.0 APC connector kit (100 pcs)



Product Code: CT-LC-APC-3

Description

The LC is a small form factor (SFF) connector and is ideal for high density applications. LC is about half size of an SC connector and LC uses a 1.25mm ferrule which is half the dimension of a SC ferrule. The LC connector makes use of an enhanced edition of the well-known, user-friendly RJ-style connector that offers a reassuring, clear click when connected.

The latest, single-set design improves the connector's strength and complies with side-load requirements of standard 2.5 mm connectors. Jumper LC connectors are equipped with detachable clips making it easier to rectify polarity inaccuracies during termination. The distinctive mixture of small size and the click of connectivity make the LC connector a perfect pick for today's high performance networks.

LC connector features

- Compact, pull-proof design
- RJ-45 style interface, half the dimension of a regular connector
- Push & pull mechanism like RJ connectors
- Detachable clips for simplex as well as duplex connectors
- Polarized and color coded
- UL-rated plastic housing and boots in green, blue, aqua and beige colors
- Low insertion loss and low back reflection

LC connector specifications

LC connectors	Singlemode	Multimode
Insertion Loss	≤0.20dB	≤0.25dB
Return Loss	≥50dB(PC)	N/A
	≥55dB(UPC)	N/A
	≥65dB(APC)	N/A
Durability	≤0.20dB typical change after 1000 mating	
Operating Temperature	-40 to +80°C	

ProCables LC connector kit versions

LC connectors and related products have both single mode and multimode types. The LC connector family includes single mode LC UPC connector, single mode LC APC connector and multimode LC UPC connector. There are simplex LC connectors and duplex types.

We supply various kinds of LC fiber optic connectors, adapters, attenuators and cable assemblies. These products are compliant to TIA /EIA and IEC standard. They are suitable for use in Gigabit Ethernet, multimedia, industrial and military applications.

LC 3.0 MM connector kit (100 pcs)



Description

The LC is a small form factor (SFF) connector and is ideal for high density applications. LC is about half size of an SC connector and LC uses a 1.25mm ferrule which is half the dimension of a SC ferrule. The LC connector makes use of an enhanced edition of the well-known, user-friendly RJ-style connector that offers a reassuring, clear click when connected.

Product Code: CT-LC-MM-3

The latest, single-set design improves the connector's strength and complies with side-load requirements of standard 2.5 mm connectors. Jumper LC connectors are equipped with detachable clips making it easier to rectify polarity inaccuracies during termination. The distinctive mixture of small size and the click of connectivity make the LC connector a perfect pick for today's high performance networks.

LC connector features

- Compact, pull-proof design
- RJ-45 style interface, half the dimension of a regular connector
- Push & pull mechanism like RJ connectors
- Detachable clips for simplex as well as duplex connectors
- Polarized and color coded
- UL-rated plastic housing and boots in green, blue, aqua and beige colors
- Low insertion loss and low back reflection

LC connector specifications

LC connectors	Singlemode	Multimode
Insertion Loss	≤0.20dB	≤0.25dB
Return Loss	≥50dB(PC)	N/A
	≥55dB(UPC)	N/A
	≥65dB(APC)	N/A
Durability	≤0.20dB typical change after 1000 mating	
Operating Temperature	-40 to +80°C	

ProCables LC connector kit versions

LC connectors and related products have both single mode and multimode types. The LC connector family includes single mode LC UPC connector, single mode LC APC connector and multimode LC UPC connector. There are simplex LC connectors and duplex types.

We supply various kinds of LC fiber optic connectors, adapters, attenuators and cable assemblies. These products are compliant to TIA /EIA and IEC standard. They are suitable for use in Gigabit Ethernet, multimedia, industrial and military applications.

LC 3.0 SM connector kit (100 pcs)



Product Code: CT-LC-MM-3

Description

The LC is a small form factor (SFF) connector and is ideal for high density applications. LC is about half size of an SC connector and LC uses a 1.25mm ferrule which is half the dimension of a SC ferrule. The LC connector makes use of an enhanced edition of the well-known, user-friendly RJ-style connector that offers a reassuring, clear click when connected.

The latest, single-set design improves the connector's strength and complies with side-load requirements of standard 2.5 mm connectors. Jumper LC connectors are equipped with detachable clips making it easier to rectify polarity inaccuracies during termination. The distinctive mixture of small size and the click of connectivity make the LC connector a perfect pick for today's high performance networks.

LC connector features

- Compact, pull-proof design
- RJ-45 style interface, half the dimension of a regular connector
- Push & pull mechanism like RJ connectors
- Detachable clips for simplex as well as duplex connectors
- Polarized and color coded
- UL-rated plastic housing and boots in green, blue, aqua and beige colors
- Low insertion loss and low back reflection

LC connector specifications

LC connectors	Singlemode	Multimode
Insertion Loss	≤0.20dB	≤0.25dB
Return Loss	≥50dB(PC)	N/A
	≥55dB(UPC)	N/A
	≥65dB(APC)	N/A
Durability	≤0.20dB typical change after 1000 mating	
Operating Temperature	-40 to +80°C	

ProCables LC connector kit versions

LC connectors and related products have both single mode and multimode types. The LC connector family includes single mode LC UPC connector, single mode LC APC connector and multimode LC UPC connector. There are simplex LC connectors and duplex types.

We supply various kinds of LC fiber optic connectors, adapters, attenuators and cable assemblies. These products are compliant to TIA /EIA and IEC standard. They are suitable for use in Gigabit Ethernet, multimedia, industrial and military applications.

SC Connectors

SC 0.9 APC connector kit (100 pcs)



Product Code: CT-SC-APC-0.9

Description

The SC connector kit comprises of a polymer body with ceramic ferrule/spring/crimp barrel assembly plus a crimp over the sleeve and rubber boot. These connectors are suitable for 900µm, 2mm and 3mm cables. The combination of a ceramic ferrule with precision polymer housing provides consistent long-term mechanical and optical performance. SC fiber optic connectors use 2.5mm ceramic ferrules.

According to industry standards, the singlemode SC UPC connector is in blue, the singlemode SC APC connector is in green, and the multimode SC UPC is beige in color.

SC connector features

- Compliant with Telcordia, TIA/IEA, IEC and JIS standards
- Low insertion loss and back reflection
- One-piece construction & puff-proof design
- Free-floating ceramic ferrule.
- Precision anti-rotation key and corrosion resistant body.
- UL-rated plastic housing and boots in green, blue, aqua and beige colors.
- Telcordia style boots.

LC connector specifications

LC connectors	Singlemode	Multimode
Insertion Loss	≤0.20dB	≤0.25dB
Return Loss	≥50dB(PC)	N/A
	≥55dB(UPC)	N/A
	≥65dB(APC)	N/A
Durability	≤0.20dB typical change after 1000 mating	
Operating Temperature	-40 to +80°C	

ProCables SC connector kit versions

SC fiber products are available for both singlemode and multimode. There are two types of singlemode: SC UPC and SC APC whilst multimode is available in SC UPC only.

SC 0.9 MM connector kit (100 pcs)



Description

The SC connector kit comprises of a polymer body with ceramic ferrule/spring/crimp barrel assembly plus a crimp over the sleeve and rubber boot. These connectors are suitable for 900µm, 2mm and 3mm cables. The combination of a ceramic ferrule with precision polymer housing provides consistent long-term mechanical and optical performance. SC fiber optic connectors use 2.5mm ceramic ferrules.

Product Code: CT-SC-MM-0.9

According to industry standards, the singlemode SC UPC connector is in blue, the singlemode SC APC connector is in green, and the multimode SC UPC is beige in color.

SC connector features

- Compliant with Telcordia, TIA/IEA, IEC and JIS standards
- Low insertion loss and back reflection
- One-piece construction & puff-proof design
- Free-floating ceramic ferrule.
- Precision anti-rotation key and corrosion resistant body.
- UL-rated plastic housing and boots in green, blue, aqua and beige colors.
- Telcordia style boots.

LC connector specifications

LC connectors	Singlemode	Multimode
Insertion Loss	≤0.20dB	≤0.25dB
Return Loss	≥50dB(PC)	N/A
	≥55dB(UPC)	N/A
	≥65dB(APC)	N/A
Durability	≤0.20dB typical change after 1000 mating	
Operating Temperature	-40 to +80°C	

ProCables SC connector kit versions

SC fiber products are available for both singlemode and multimode. There are two types of singlemode: SC UPC and SC APC whilst multimode is available in SC UPC only.

SC 0.9 SM connector kit (100 pcs)



Product Code: CT-SC-SM-0.9

Description

The SC connector kit comprises of a polymer body with ceramic ferrule/spring/crimp barrel assembly plus a crimp over the sleeve and rubber boot. These connectors are suitable for 900µm, 2mm and 3mm cables. The combination of a ceramic ferrule with precision polymer housing provides consistent long-term mechanical and optical performance. SC fiber optic connectors use 2.5mm ceramic ferrules.

According to industry standards, the singlemode SC UPC connector is in blue, the singlemode SC APC connector is in green, and the multimode SC UPC is beige in color.

SC connector features

- Compliant with Telcordia, TIA/IEA,IEC and JIS standards
- Low insertion loss and back reflection
- One-piece construction & puff-proof design
- Free-floating ceramic ferrule.
- Precision anti-rotation key and corrosion resistant body.
- UL-rated plastic housing and boots in green, blue, aqua and beige colors.
- Telcordia style boots.

LC connector specifications

LC connectors	Singlemode	Multimode
Insertion Loss	≤0.20dB	≤0.25dB
Return Loss	≥50dB(PC)	N/A
	≥55dB(UPC)	N/A
	≥65dB(APC)	N/A
Durability	≤0.20dB typical change after 1000 mating	
Operating Temperature	-40 to +80°C	

ProCables SC connector kit versions

SC fiber products are available for both singlemode and multimode. There are two types of singlemode: SC UPC and SC APC whilst multimode is available in SC UPC only.

SC 2.0 APC connector kit (100 pcs)



Description

Product Code: CT-SC-APC-2

The SC connector kit comprises of a polymer body with ceramic ferrule/spring/crimp barrel assembly plus a crimp over the sleeve and rubber boot. These connectors are suitable for 900µm, 2mm and 3mm cables. The combination of a ceramic ferrule with precision polymer housing provides consistent long-term mechanical and optical performance. SC fiber optic connectors use 2.5mm ceramic ferrules.

According to industry standards, the singlemode SC UPC connector is in blue, the singlemode SC APC connector is in green, and the multimode SC UPC is beige in color.

SC connector features

- Compliant with Telcordia, TIA/IEA,IEC and JIS standards
- Low insertion loss and back reflection
- One-piece construction & puff-proof design
- Free-floating ceramic ferrule.
- Precision anti-rotation key and corrosion resistant body.
- UL-rated plastic housing and boots in green, blue, aqua and beige colors.
- Telcordia style boots.

LC connector specifications

LC connectors	Singlemode	Multimode
Insertion Loss	≤0.20dB	≤0.25dB
Return Loss	≥50dB(PC)	N/A
	≥55dB(UPC)	N/A
	≥65dB(APC)	N/A
Durability	≤0.20dB typical change after 1000 mating	
Operating Temperature	-40 to +80°C	

ProCables SC connector kit versions

SC fiber products are available for both singlemode and multimode. There are two types of singlemode: SC UPC and SC APC whilst multimode is available in SC UPC only.

SC 2.0 MM connector kit (100 pcs)



Product Code: CT-SC-MM-2

Description

The SC connector kit comprises of a polymer body with ceramic ferrule/spring/crimp barrel assembly plus a crimp over the sleeve and rubber boot. These connectors are suitable for 900µm, 2mm and 3mm cables. The combination of a ceramic ferrule with precision polymer housing provides consistent long-term mechanical and optical performance. SC fiber optic connectors use 2.5mm ceramic ferrules.

According to industry standards, the singlemode SC UPC connector is in blue, the singlemode SC APC connector is in green, and the multimode SC UPC is beige in color.

SC connector features

- Compliant with Telcordia, TIA/IEA, IEC and JIS standards
- Low insertion loss and back reflection
- One-piece construction & puff-proof design
- Free-floating ceramic ferrule.
- Precision anti-rotation key and corrosion resistant body.
- UL-rated plastic housing and boots in green, blue, aqua and beige colors.
- Telcordia style boots.

LC connector specifications

LC connectors	Singlemode	Multimode
Insertion Loss	≤0.20dB	≤0.25dB
Return Loss	≥50dB(PC)	N/A
	≥55dB(UPC)	N/A
	≥65dB(APC)	N/A
Durability	≤0.20dB typical change after 1000 mating	
Operating Temperature	-40 to +80°C	

AproCables SC connector kit versions

SC fiber products are available for both singlemode and multimode. There are two types of singlemode: SC UPC and SC APC whilst multimode is available in SC UPC only.

SC 2.0 SM connector kit (100 pcs)



Product Code: CT-SC-SM-2

Description

The SC connector kit comprises of a polymer body with ceramic ferrule/spring/crimp barrel assembly plus a crimp over the sleeve and rubber boot. These connectors are suitable for 900µm, 2mm and 3mm cables. The combination of a ceramic ferrule with precision polymer housing provides consistent long-term mechanical and optical performance. SC fiber optic connectors use 2.5mm ceramic ferrules.

According to industry standards, the singlemode SC UPC connector is in blue, the singlemode SC APC connector is in green, and the multimode SC UPC is beige in color.

SC connector features

- Compliant with Telcordia, TIA/IEA, IEC and JIS standards
- Low insertion loss and back reflection
- One-piece construction & puff-proof design
- Free-floating ceramic ferrule.
- Precision anti-rotation key and corrosion resistant body.
- UL-rated plastic housing and boots in green, blue, aqua and beige colors.
- Telcordia style boots.

LC connector specifications

LC connectors	Singlemode	Multimode
Insertion Loss	≤0.20dB	≤0.25dB
Return Loss	≥50dB(PC)	N/A
	≥55dB(UPC)	N/A
	≥65dB(APC)	N/A
Durability	≤0.20dB typical change after 1000 mating	
Operating Temperature	-40 to +80°C	

ProCables SC connector kit versions

SC fiber products are available for both singlemode and multimode. There are two types of singlemode: SC UPC and SC APC whilst multimode is available in SC UPC only.

SC 3.0 APC connector kit (100 pcs)



Description

The SC connector kit comprises of a polymer body with ceramic ferrule/spring/crimp barrel assembly plus a crimp over the sleeve and rubber boot. These connectors are suitable for 900µm, 2mm and 3mm cables. The combination of a ceramic ferrule with precision polymer housing provides consistent long-term mechanical and optical performance. SC fiber optic connectors use 2.5mm ceramic ferrules.

Product Code: CT-SC-APC-3

According to industry standards, the singlemode SC UPC connector is in blue, the singlemode SC APC connector is in green, and the multimode SC UPC is beige in color.

SC connector features

- Compliant with Telcordia, TIA/IEA,IEC and JIS standards
- Low insertion loss and back reflection
- One-piece construction & puff-proof design
- Free-floating ceramic ferrule.
- Precision anti-rotation key and corrosion resistant body.
- UL-rated plastic housing and boots in green, blue, aqua and beige colors.
- Telcordia style boots.

LC connector specifications

LC connectors	Singlemode	Multimode
Insertion Loss	≤0.20dB	≤0.25dB
Return Loss	≥50dB(PC)	N/A
	≥55dB(UPC)	N/A
	≥65dB(APC)	N/A
Durability	≤0.20dB typical change after 1000 mating	
Operating Temperature	-40 to +80°C	

ProCables SC connector kit versions

SC fiber products are available for both singlemode and multimode. There are two types of singlemode: SC UPC and SC APC whilst multimode is available in SC UPC only.

SC 3.0 MM connector kit (100 pcs)



Product Code: CT-SC-MM-3

Description

The SC connector kit comprises of a polymer body with ceramic ferrule/spring/crimp barrel assembly plus a crimp over the sleeve and rubber boot. These connectors are suitable for 900µm, 2mm and 3mm cables. The combination of a ceramic ferrule with precision polymer housing provides consistent long-term mechanical and optical performance. SC fiber optic connectors use 2.5mm ceramic ferrules.

According to industry standards, the singlemode SC UPC connector is in blue, the singlemode SC APC connector is in green, and the multimode SC UPC is beige in color.

SC connector features

- Compliant with Telcordia, TIA/IEA, IEC and JIS standards
- Low insertion loss and back reflection
- One-piece construction & puff-proof design
- Free-floating ceramic ferrule.
- Precision anti-rotation key and corrosion resistant body.
- UL-rated plastic housing and boots in green, blue, aqua and beige colors.
- Telcordia style boots.

LC connector specifications

LC connectors	Singlemode	Multimode
Insertion Loss	≤0.20dB	≤0.25dB
Return Loss	≥50dB(PC)	N/A
	≥55dB(UPC)	N/A
	≥65dB(APC)	N/A
Durability	≤0.20dB typical change after 1000 mating	
Operating Temperature	-40 to +80°C	

ProCables SC connector kit versions

SC fiber products are available for both singlemode and multimode. There are two types of singlemode: SC UPC and SC APC whilst multimode is available in SC UPC only.

SC 3.0 SM connector kit (100 pcs)



Description

The SC connector kit comprises of a polymer body with ceramic ferrule/spring/crimp barrel assembly plus a crimp over the sleeve and rubber boot. These connectors are suitable for 900µm, 2mm and 3mm cables. The combination of a ceramic ferrule with precision polymer housing provides consistent long-term mechanical and optical performance. SC fiber optic connectors use 2.5mm ceramic ferrules.

Product Code: CT-SC-SM-3

According to industry standards, the singlemode SC UPC connector is in blue, the singlemode SC APC connector is in green, and the multimode SC UPC is beige in color.

SC connector features

- Compliant with Telcordia, TIA/IEA,IEC and JIS standards
- Low insertion loss and back reflection
- One-piece construction & puff-proof design
- Free-floating ceramic ferrule.
- Precision anti-rotation key and corrosion resistant body.
- UL-rated plastic housing and boots in green, blue, aqua and beige colors.
- Telcordia style boots.

SC connector specifications

SC connectors	Singlemode	Multimode
Insertion Loss	≤0.20dB	≤0.25dB
Return Loss	≥50dB(PC)	N/A
	≥55dB(UPC)	N/A
	≥65dB(APC)	N/A
Durability	≤0.20dB typical change after 1000 mating	
Operating Temperature	-40 to +80°C	

ProCables SC connector kit versions

SC fiber products are available for both singlemode and multimode. There are two types of singlemode: SC UPC and SC APC whilst multimode is available in SC UPC only.

ST Connectors

ST 0.9 MM connector kit (100 pcs)



Product Code: CT-ST-MM-0.9

Description

Originally developed by AT&T, ST stands for Straight Tip. ST connectors are among the most commonly used fiber optic connectors in networking applications. A ST connector is cylindrical with a twist lock coupling, 2.5mm keyed ferrule. It has a bayonet mount and a long cylindrical ferrule to hold the fiber.

Our ST fiber connectors and related products follow the IEC 61 754-2 standards. We can also offer stainless alloy/metal ferrule ST connectors. Please [contact us for a quote](#).

ST connector features

- Bayonet style housing for easy termination
- Epoxy and epoxy free versions
- Stainless alloy/metal and ceramic ferrule are available
- High precision alignment
- Low insertion loss and low back reflection

ST connector applications

- LANs
- Data processing networks
- Premise installations
- Instrumentation

ST connector specifications

ST connectors	Singlemode	Multimode
Insertion Loss	≤0.20dB	≤0.25dB
Return Loss	≥50dB(PC)	N/A
	≥55dB(UPC)	N/A
	≥65dB(APC)	N/A
Durability	≤0.20dB typical change after 1000 mating	
Operating Temperature	-40 to +80°C	

ProCables ST connector kit versions

There are generally three types of ST connectors: single mode ST UPC fiber optic connector, single mode ST APC fiber optic connector, and multimode ST UPC fiber optic connector. We supply a wide range of the ST fiber optic connectors and ST fiber cable products.

ST 0.9 SM connector kit (100 pcs)



Product Code: CT-ST-SM-0.9

Description

Originally developed by AT&T, ST stands for Straight Tip. ST connectors are among the most commonly used fiber optic connectors in networking applications. A ST connector is cylindrical with a twist lock coupling, 2.5mm keyed ferrule. It has a bayonet mount and a long cylindrical ferrule to hold the fiber.

Our ST fiber connectors and related products follow the IEC 61 754-2 standards. We can also offer stainless alloy/metal ferrule ST connectors. Please [contact us for a quote](#).

ST connector features

- Bayonet style housing for easy termination
- Epoxy and epoxy free versions
- Stainless alloy/metal and ceramic ferrule are available
- High precision alignment
- Low insertion loss and low back reflection

ST connector applications

- LANs
- Data processing networks
- Premise installations
- Instrumentation

ST connector specifications

ST connectors	Singlemode	Multimode
Insertion Loss	≤0.20dB	≤0.25dB
Return Loss	≥50dB(PC)	N/A
	≥55dB(UPC)	N/A
	≥65dB(APC)	N/A
Durability	≤0.20dB typical change after 1000 mating	
Operating Temperature	-40 to +80°C	

ProCables ST connector kit versions

There are generally three types of ST connectors: single mode ST UPC fiber optic connector, single mode ST APC fiber optic connector, and multimode ST UPC fiber optic connector. We supply a wide range of the ST fiber optic connectors and ST fiber cable products.

ST 2.0 MM connector kit (100 pcs)



Description

Originally developed by AT&T, ST stands for Straight Tip. ST connectors are among the most commonly used fiber optic connectors in networking applications. A ST connector is cylindrical with a twist lock coupling, 2.5mm keyed ferrule. It has a bayonet mount and a long cylindrical ferrule to hold the fiber.

Product Code: CT-ST-MM-2

Our ST fiber connectors and related products follow the IEC 61 754-2 standards. We can also offer stainless alloy/metal ferrule ST connectors. Please [contact us for a quote](#).

ST connector features

- Bayonet style housing for easy termination
- Epoxy and epoxy free versions
- Stainless alloy/metal and ceramic ferrule are available
- High precision alignment
- Low insertion loss and low back reflection

ST connector applications

- LANs
- Data processing networks
- Premise installations
- Instrumentation

ST connector specifications

ST connectors	Singlemode	Multimode
Insertion Loss	≤0.20dB	≤0.25dB
Return Loss	≥50dB(PC)	N/A
	≥55dB(UPC)	N/A
	≥65dB(APC)	N/A
Durability	≤0.20dB typical change after 1000 mating	
Operating Temperature	-40 to +80°C	

ProCables ST connector kit versions

There are generally three types of ST connectors: single mode ST UPC fiber optic connector, single mode ST APC fiber optic connector, and multimode ST UPC fiber optic connector. We supply a wide range of the ST fiber optic connectors and ST fiber cable products.

ST 2.0 SM connector kit (100 pcs)



Description

Originally developed by AT&T, ST stands for Straight Tip. ST connectors are among the most commonly used fiber optic connectors in networking applications. A ST connector is cylindrical with a twist lock coupling, 2.5mm keyed ferrule. It has a bayonet mount and a long cylindrical ferrule to hold the fiber.

Product Code: CT-ST-SM-2

Our ST fiber connectors and related products follow the IEC 61 754-2 standards. We can also offer stainless alloy/metal ferrule ST connectors. Please [contact us for a quote](#).

ST connector features

- Bayonet style housing for easy termination
- Epoxy and epoxy free versions
- Stainless alloy/metal and ceramic ferrule are available
- High precision alignment
- Low insertion loss and low back reflection

ST connector applications

- LANs
- Data processing networks
- Premise installations
- Instrumentation

ST connector specifications

ST connectors	Singlemode	Multimode
Insertion Loss	≤0.20dB	≤0.25dB
Return Loss	≥50dB(PC)	N/A
	≥55dB(UPC)	N/A
	≥65dB(APC)	N/A
Durability	≤0.20dB typical change after 1000 mating	
Operating Temperature	-40 to +80°C	

ProCables ST connector kit versions

There are generally three types of ST connectors: single mode ST UPC fiber optic connector, single mode ST APC fiber optic connector, and multimode ST UPC fiber optic connector. We supply a wide range of the ST fiber optic connectors and ST fiber cable products.

ST 3.0 MM connector kit (100 pcs)



Description

Originally developed by AT&T, ST stands for Straight Tip. ST connectors are among the most commonly used fiber optic connectors in networking applications. A ST connector is cylindrical with a twist lock coupling, 2.5mm keyed ferrule. It has a bayonet mount and a long cylindrical ferrule to hold the fiber.

Product Code: CT-ST-MM-3

Our ST fiber connectors and related products follow the IEC 61 754-2 standards. We can also offer stainless alloy/metal ferrule ST connectors. Please [contact us for a quote](#).

ST connector features

- Bayonet style housing for easy termination
- Epoxy and epoxy free versions
- Stainless alloy/metal and ceramic ferrule are available
- High precision alignment
- Low insertion loss and low back reflection

ST connector applications

- LANs
- Data processing networks
- Premise installations
- Instrumentation

ST connector specifications

ST connectors	Singlemode	Multimode
Insertion Loss	≤0.20dB	≤0.25dB
Return Loss	≥50dB(PC)	N/A
	≥55dB(UPC)	N/A
	≥65dB(APC)	N/A
Durability	≤0.20dB typical change after 1000 mating	
Operating Temperature	-40 to +80°C	

ProCables ST connector kit versions

There are generally three types of ST connectors: single mode ST UPC fiber optic connector, single mode ST APC fiber optic connector, and multimode ST UPC fiber optic connector. We supply a wide range of the ST fiber optic connectors and ST fiber cable products.

ST 3.0 SM connector kit (100 pcs)



Description

Originally developed by AT&T, ST stands for Straight Tip. ST connectors are among the most commonly used fiber optic connectors in networking applications. A ST connector is cylindrical with a twist lock coupling, 2.5mm keyed ferrule. It has a bayonet mount and a long cylindrical ferrule to hold the fiber.

Product Code: CT-ST-SM-3

Our ST fiber connectors and related products follow the IEC 61 754-2 standards. We can also offer stainless alloy/metal ferrule ST connectors. Please [contact us for a quote](#).

ST connector features

- Bayonet style housing for easy termination
- Epoxy and epoxy free versions
- Stainless alloy/metal and ceramic ferrule are available
- High precision alignment
- Low insertion loss and low back reflection

ST connector applications

- LANs
- Data processing networks
- Premise installations
- Instrumentation

ST connector specifications

ST connectors	Singlemode	Multimode
Insertion Loss	≤0.20dB	≤0.25dB
Return Loss	≥50dB(PC)	N/A
	≥550dB(UPC)	N/A
	≥65dB(APC)	N/A
Durability	≤0.20dB typical change after 1000 mating	
Operating Temperature	-40 to +80°C	

ProCables ST connector kit versions

There are generally three types of ST connectors: single mode ST UPC fiber optic connector, single mode ST APC fiber optic connector, and multimode ST UPC fiber optic connector. We supply a wide range of the ST fiber optic connectors and ST fiber cable products.

Adapters

FC Adapters

FC adapter, D ring



Product Code: AD-FC-D

Features

- Low insertion loss
- Good exchangeability and repeatability
- Zirconia or phosphor bronze sleeve
- Square flange or 'D' hole mount style

Specifications

Characteristics	Unit	Single Mode & Multimode
Insertion Loss (IL)	dB	≤0.3
Exchangeability	dB	≤0.2
Repeatability (500 remates)	dB	≤0.2
Sleeve material	-	Zirconia
Housing material	-	Nickel plated Copper
Operating Temperature	°C	40 ~ +70
Storage Temperature	°C	-40 ~ +70

Applications

- Telecommunication
- Computer networks
- CATV networks
- Active device termination
- Instrumentation

FC adapter, flange type



Features

- Low insertion loss
- Good exchangeability and repeatability
- Zirconia or phosphor bronze sleeve
- Square flange or 'D' hole mount style

Product Code: AD-FC-F

Specifications

Characteristics	Unit	Single Mode & Multimode
Insertion Loss (IL)	dB	≤0.3
Exchangeability	dB	≤0.2
Repeatability (500 remates)	dB	≤0.2
Sleeve material	-	Zirconia
Housing material	-	Nickel plated Copper
Operating Temperature	°C	40 ~ +70
Storage Temperature	°C	-40 ~ +70

Applications

- Telecommunication
- Computer networks
- CATV networks
- Active device termination
- Instrumentation

Hybrid Adapters

LC-FC adapter



Features

- Low insertion loss
- Good exchangeability and repeatability
- Zirconia or phosphor bronze sleeve
- Flange mount style

Product Code: AD-LC-FC

Specifications

Characteristics	Unit	Single Mode & Multimode
Insertion Loss (IL)	dB	≤0.3
Exchangeability	dB	≤0.2
Repeatability (500 remates)	dB	≤0.2
Sleeve material	-	Zirconia
Housing material	-	Nickel plated Copper or plastic
Operating Temperature	°C	40 ~ +70
Storage Temperature	°C	-40 ~ +70

Applications

- Local area networks
- Fast ethernet
- Fiber channel
- Instrumentation

LC-SC adapter



Features

- Low insertion loss
- Good exchangeability and repeatability
- Zirconia or phosphor bronze sleeve
- Flange mount style

Product Code: AD-SC-LC

Specifications

Characteristics	Unit	Single Mode & Multimode
Insertion Loss (IL)	dB	≤0.3
Exchangeability	dB	≤0.2
Repeatability (500 remates)	dB	≤0.2
Sleeve material	-	Zirconia
Housing material	-	Nickel plated Copper or plastic
Operating Temperature	°C	40 ~ +70
Storage Temperature	°C	-40 ~ +70

Applications

- Local area networks
- Fast ethernet
- Fiber channel
- Instrumentation

LC-ST adapter



Features

- Low insertion loss
- Good exchangeability and repeatability
- Zirconia or phosphor bronze sleeve
- Flange mount style

Product Code: AD-LC-ST

Specifications

Characteristics	Unit	Single Mode & Multimode
Insertion Loss (IL)	dB	≤0.3
Exchangeability	dB	≤0.2
Repeatability (500 remates)	dB	≤0.2
Sleeve material	-	Zirconia
Housing material	-	Nickel plated Copper or plastic
Operating Temperature	°C	40 ~ +70
Storage Temperature	°C	-40 ~ +70

Applications

- Local area networks
- Fast ethernet
- Fiber channel
- Instrumentation

ST-FC adapter



Features

- Low insertion loss
- Good exchangeability and repeatability
- Zirconia or phosphor bronze sleeve
- Flange mount style

Product Code: AD-ST-FC

Specifications

Characteristics	Unit	Single Mode & Multimode
Insertion Loss (IL)	dB	≤0.3
Exchangeability	dB	≤0.2
Repeatability (500 remates)	dB	≤0.2
Sleeve material	-	Zirconia
Housing material	-	Nickel plated Copper or plastic
Operating Temperature	°C	40 ~ +70
Storage Temperature	°C	-40 ~ +70

Applications

- Local area networks
- Fast ethernet
- Fiber channel
- Instrumentation

ST-SC adapter



Features

- Low insertion loss
- Good exchangeability and repeatability
- Zirconia or phosphor bronze sleeve
- Flange mount style

Product Code: AD-ST-SC

Specifications

Characteristics	Unit	Single Mode & Multimode
Insertion Loss (IL)	dB	≤0.3
Exchangeability	dB	≤0.2
Repeatability (500 remates)	dB	≤0.2
Sleeve material	-	Zirconia
Housing material	-	Nickel plated Copper or plastic
Operating Temperature	°C	40 ~ +70
Storage Temperature	°C	-40 ~ +70

Applications

- Local area networks
- Fast ethernet
- Fiber channel
- Instrumentation

LC Adapters

LC APC Duplex adapter, SC footprint



Features

- Compact design
- Telcordia, ANSI, TIA/EIA, and ISO compliance
- Color coding & polarization
- High precision alignment
- Low insertion and return loss and back reflection

Product Code: AD-LC-APC-DX-SC

Specifications

Characteristics	Unit	Single Mode & Multimode
Insertion Loss (IL)	dB	≤0.3
Exchangeability	dB	≤0.2
Repeatability (500 remates)	dB	≤0.2
Sleeve material	-	Zirconia or Phosphor bronze
Housing material	-	Nickel plated Copper or plastic
Operating Temperature	°C	40 ~ +70
Storage Temperature	°C	-40 ~ +70

Applications

- Gigabit Ethernet
- Video
- CATV
- Active device/Transceiver interface
- Telecommunication networks
- Metro networks
- Premise installations
- Multimedia
- Industrial and military

LC APC Duplex adapter, stand type



Features

- Compact design
- Telcordia, ANSI, TIA/EIA, and ISO compliance
- Color coding & polarization
- High precision alignment
- Low insertion and return loss and back reflection

Product Code: AD-LC-APC-DX

Specifications

Characteristics	Unit	Single Mode & Multimode
Insertion Loss (IL)	dB	≤0.3
Exchangeability	dB	≤0.2
Repeatability (500 remates)	dB	≤0.2
Sleeve material	-	Zirconia or Phosphor bronze
Housing material	-	Nickel plated Copper or plastic
Operating Temperature	°C	40 ~ +70
Storage Temperature	°C	-40 ~ +70

Applications

- Gigabit Ethernet
- Video
- CATV
- Active device/Transceiver interface
- Telecommunication networks
- Metro networks
- Premise installations
- Multimedia
- Industrial and military

LC APC Quad adapter, stand type



Features

- Compact design
- Telcordia, ANSI, TIA/EIA, and ISO compliance
- Color coding & polarization
- High precision alignment
- Low insertion and return loss and back reflection

Product Code: AD-LC-APC-QD

Specifications

Characteristics	Unit	Single Mode & Multimode
Insertion Loss (IL)	dB	≤0.3
Exchangeability	dB	≤0.2
Repeatability (500 remates)	dB	≤0.2
Sleeve material	-	Zirconia or Phosphor bronze
Housing material	-	Nickel plated Copper or plastic
Operating Temperature	°C	40 ~ +70
Storage Temperature	°C	-40 ~ +70

Applications

- Gigabit Ethernet
- Video
- CATV
- Active device/Transceiver interface
- Telecommunication networks
- Metro networks
- Premise installations
- Multimedia
- Industrial and military

LC APC Simplex adapter



Product Code: AD-LC-APC-SX

Features

- Compact design
- Telcordia, ANSI, TIA/EIA, and ISO compliance
- Color coding & polarization
- High precision alignment
- Low insertion and return loss and back reflection

Specifications

Characteristics	Unit	Single Mode & Multimode
Insertion Loss (IL)	dB	≤0.3
Exchangeability	dB	≤0.2
Repeatability (500 remates)	dB	≤0.2
Sleeve material	-	Zirconia or Phosphor bronze
Housing material	-	Nickel plated Copper or plastic
Operating Temperature	°C	40 ~ +70
Storage Temperature	°C	-40 ~ +70

Applications

- Gigabit Ethernet
- Video
- CATV
- Active device/Transceiver interface
- Telecommunication networks
- Metro networks
- Premise installations
- Multimedia
- Industrial and military

LC duplex adapter -metal housing



Product Code: AD-LC-Metal

Features

- Compact design
- Low insertion and low back reflection loss
- TIA/EIA and IEC
- Riser and LSZH cable option
- Environmentally stable

The LC metal adapter has both single and multimode system with metal housing and Zirconia sleeves. It comes with reliable components and good metal quality. The adapter is available in PC/APC/UPC versions.

Specifications

Characteristics	Unit	Single Mode & Multimode
Insertion loss (IL)	dB	≤0.02
Exchangeability	dB	≤0.3
Repeatability (500 remates)	dB	≤0.15
Sleeve material	-	Zirconia or Phosphor bronze
Housing material	-	Nickel plated Copper
Operating temperature	°C	-40 ~ +75
Storage temperature	°C	-40 ~ +75

Applications

- Telecommunication networks
- Local area network (LAN)
- Fiber to the home (FTTH)
- Fiber optic sensors
- Testing instruments
- CATV

LC multimode Duplex adapter, SC footprint



Features

- Compact design
- Telcordia, ANSI, TIA/EIA, and ISO compliance
- Color coding & polarization
- High precision alignment
- Low insertion and return loss and back reflection

Product Code: AD-LC-MM-DX-SC

Specifications

Characteristics	Unit	Single Mode & Multimode
Insertion Loss (IL)	dB	≤0.3
Exchangeability	dB	≤0.2
Repeatability (500 remates)	dB	≤0.2
Sleeve material	-	Zirconia or Phosphor bronze
Housing material	-	Nickel plated Copper or plastic
Operating Temperature	°C	40 ~ +70
Storage Temperature	°C	-40 ~ +70

Applications

- Gigabit Ethernet
- Video
- CATV
- Active device/Transceiver interface
- Telecommunication networks
- Metro networks
- Premise installations
- Multimedia
- Industrial and military

LC multimode Duplex adapter, stand type



Product Code: AD-LC-MM-DX

Features

- Compact design
- Telcordia, ANSI, TIA/EIA, and ISO compliance
- Color coding & polarization
- High precision alignment
- Low insertion and return loss and back reflection

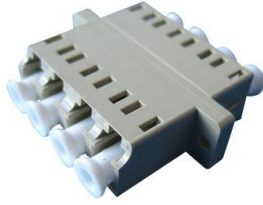
Specifications

Characteristics	Unit	Single Mode & Multimode
Insertion Loss (IL)	dB	≤0.3
Exchangeability	dB	≤0.2
Repeatability (500 remates)	dB	≤0.2
Sleeve material	-	Zirconia or Phosphor bronze
Housing material	-	Nickel plated Copper or plastic
Operating Temperature	°C	40 ~ +70
Storage Temperature	°C	-40 ~ +70

Applications

- Gigabit Ethernet
- Video
- CATV
- Active device/Transceiver interface
- Telecommunication networks
- Metro networks
- Premise installations
- Multimedia
- Industrial and military

LC multimode Quad adapter, stand type



Features

- Compact design
- Telcordia, ANSI, TIA/EIA, and ISO compliance
- Color coding & polarization
- High precision alignment
- Low insertion and return loss and back reflection

Product Code: AD-LC-MM-QD

Specifications

Characteristics	Unit	Single Mode & Multimode
Insertion Loss (IL)	dB	≤0.3
Exchangeability	dB	≤0.2
Repeatability (500 remates)	dB	≤0.2
Sleeve material	-	Zirconia or Phosphor bronze
Housing material	-	Nickel plated Copper or plastic
Operating Temperature	°C	40 ~ +70
Storage Temperature	°C	-40 ~ +70

Applications

- Gigabit Ethernet
- Video
- CATV
- Active device/Transceiver interface
- Telecommunication networks
- Metro networks
- Premise installations
- Multimedia
- Industrial and military

LC multimode Simplex adapter



Product Code: AD-LC-MM-SX

Features

- Compact design
- Telcordia, ANSI, TIA/EIA, and ISO compliance
- Color coding & polarization
- High precision alignment
- Low insertion and return loss and back reflection

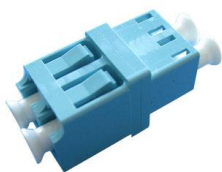
Specifications

Characteristics	Unit	Single Mode & Multimode
Insertion Loss (IL)	dB	≤0.3
Exchangeability	dB	≤0.2
Repeatability (500 remates)	dB	≤0.2
Sleeve material	-	Zirconia or Phosphor bronze
Housing material	-	Nickel plated Copper or plastic
Operating Temperature	°C	40 ~ +70
Storage Temperature	°C	-40 ~ +70

Applications

- Gigabit Ethernet
- Video
- CATV
- Active device/Transceiver interface
- Telecommunication networks
- Metro networks
- Premise installations
- Multimedia
- Industrial and military

LC OM3 10G Duplex adapter, stand type



Product Code: AD-LC-OM3-DX

Features

- Compact design
- Telcordia, ANSI, TIA/EIA, and ISO compliance
- Color coding & polarization
- High precision alignment
- Low insertion and return loss and back reflection

Specifications

Characteristics	Unit	Single Mode & Multimode
Insertion Loss (IL)	dB	≤0.3
Exchangeability	dB	≤0.2
Repeatability (500 remates)	dB	≤0.2
Sleeve material	-	Zirconia or Phosphor bronze
Housing material	-	Nickel plated Copper or plastic
Operating Temperature	°C	40 ~ +70
Storage Temperature	°C	-40 ~ +70

Applications

- Gigabit Ethernet
- Video
- CATV
- Active device/Transceiver interface
- Telecommunication networks
- Metro networks
- Premise installations
- Multimedia
- Industrial and military

LC singlemode Duplex adapter, SC footprint



Product Code: AD-LC-SM-DX-SC

Features

- Compact design
- Telcordia, ANSI, TIA/EIA, and ISO compliance
- Color coding & polarization
- High precision alignment
- Low insertion and return loss and back reflection

Specifications

Characteristics	Unit	Single Mode & Multimode
Insertion Loss (IL)	dB	≤0.3
Exchangeability	dB	≤0.2
Repeatability (500 remates)	dB	≤0.2
Sleeve material	-	Zirconia or Phosphor bronze
Housing material	-	Nickel plated Copper or plastic
Operating Temperature	°C	40 ~ +70
Storage Temperature	°C	-40 ~ +70

Applications

- Gigabit Ethernet
- Video
- CATV
- Active device/Transceiver interface
- Telecommunication networks
- Metro networks
- Premise installations
- Multimedia
- Industrial and military

LC singlemode Duplex adapter, stand type



Product Code: AD-LC-SM-DX

Features

- Compact design
- Telcordia, ANSI, TIA/EIA, and ISO compliance
- Color coding & polarization
- High precision alignment
- Low insertion and return loss and back reflection

Specifications

Characteristics	Unit	Single Mode & Multimode
Insertion Loss (IL)	dB	≤0.3
Exchangeability	dB	≤0.2
Repeatability (500 remates)	dB	≤0.2
Sleeve material	-	Zirconia or Phosphor bronze
Housing material	-	Nickel plated Copper or plastic
Operating Temperature	°C	40 ~ +70
Storage Temperature	°C	-40 ~ +70

Applications

- Gigabit Ethernet
- Video
- CATV
- Active device/Transceiver interface
- Telecommunication networks
- Metro networks
- Premise installations
- Multimedia
- Industrial and military

LC singlemode Quad adapter, stand type



Features

- Compact design
- Telcordia, ANSI, TIA/EIA, and ISO compliance
- Color coding & polarization
- High precision alignment
- Low insertion and return loss and back reflection

Product Code: AD-LC-SM-QD

Specifications

Characteristics	Unit	Single Mode & Multimode
Insertion Loss (IL)	dB	≤0.3
Exchangeability	dB	≤0.2
Repeatability (500 remates)	dB	≤0.2
Sleeve material	-	Zirconia or Phosphor bronze
Housing material	-	Nickel plated Copper or plastic
Operating Temperature	°C	40 ~ +70
Storage Temperature	°C	-40 ~ +70

Applications

- Gigabit Ethernet
- Video
- CATV
- Active device/Transceiver interface
- Telecommunication networks
- Metro networks
- Premise installations
- Multimedia
- Industrial and military

LC singlemode Simplex adapter



Features

- Compact design
- Telcordia, ANSI, TIA/EIA, and ISO compliance
- Color coding & polarization
- High precision alignment
- Low insertion and return loss and back reflection

Product Code: AD-LC-SM-SX

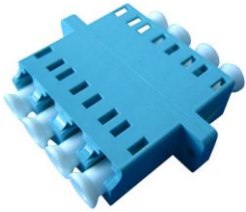
Specifications

Characteristics	Unit	Single Mode & Multimode
Insertion Loss (IL)	dB	≤0.3
Exchangeability	dB	≤0.2
Repeatability (500 remates)	dB	≤0.2
Sleeve material	-	Zirconia or Phosphor bronze
Housing material	-	Nickel plated Copper or plastic
Operating Temperature	°C	40 ~ +70
Storage Temperature	°C	-40 ~ +70

Applications

- Gigabit Ethernet
- Video
- CATV
- Active device/Transceiver interface
- Telecommunication networks
- Metro networks
- Premise installations
- Multimedia
- Industrial and military

LC OM3 10G Quad adapter, stand type



Features

- Compact design
- Telcordia, ANSI, TIA/EIA, and ISO compliance
- Color coding & polarization
- High precision alignment
- Low insertion and return loss and back reflection

Product Code: AD-LC-OM3-QD

Specifications

Characteristics	Unit	Single Mode & Multimode
Insertion Loss (IL)	dB	≤0.3
Exchangeability	dB	≤0.2
Repeatability (500 remates)	dB	≤0.2
Sleeve material	-	Zirconia or Phosphor bronze
Housing material	-	Nickel plated Copper or plastic
Operating Temperature	°C	40 ~ +70
Storage Temperature	°C	-40 ~ +70

Applications

- Gigabit Ethernet
- Video
- CATV
- Active device/Transceiver interface
- Telecommunication networks
- Metro networks
- Premise installations
- Multimedia
- Industrial and military

Other Adapters

E2000 APC adapter



Features

- Compliance with Telcordia, ANSI, IEC, TIA/EIA, NTT and JIS specifications
- Low insertion loss & return loss
- High precision alignment

Product Code: AD-E2000-APC

Specifications

Characteristics	Unit	Single Mode & Multimode
Insertion Loss (IL)	dB	≤0.3
Exchangeability	dB	≤0.2
Repeatability (500 remates)	dB	≤0.2
Sleeve material	-	Zirconia or Phosphor bronze
Housing material	-	Nickel plated Copper or plastic
Operating Temperature	°C	40 ~ +70
Storage Temperature	°C	-40 ~ +70

Applications

- CATV
- Metro
- Telecommunication networks
- Local Area Networks (LANs)
- Premise installation

E2000 multimode adapter



Product Code: AD-E2000

Features

- Compliance with Telcordia, ANSI, IEC, TIA/EIA, NTT and JIS specifications
- Low insertion loss & return loss
- High precision alignment

Specifications

Characteristics	Unit	Single Mode & Multimode
Insertion Loss (IL)	dB	≤0.3
Exchangeability	dB	≤0.2
Repeatability (500 remates)	dB	≤0.2
Sleeve material	-	Zirconia or Phosphor bronze
Housing material	-	Nickel plated Copper or plastic
Operating Temperature	°C	40 ~ +70
Storage Temperature	°C	-40 ~ +70

Applications

- CATV
- Metro
- Telecommunication networks
- Local Area Networks (LANs)
- Premise installation

E2000 singlemode adapter



Features

- Compliance with Telcordia, ANSI, IEC, TIA/EIA, NTT and JIS specifications
- Low insertion loss & return loss
- High precision alignment

Product Code: AD-E2000-SM

Specifications

Characteristics	Unit	Single Mode & Multimode
Insertion Loss (IL)	dB	≤0.3
Exchangeability	dB	≤0.2
Repeatability (500 remates)	dB	≤0.2
Sleeve material	-	Zirconia or Phosphor bronze
Housing material	-	Nickel plated Copper or plastic
Operating Temperature	°C	40 ~ +70
Storage Temperature	°C	-40 ~ +70

Applications

- CATV
- Metro
- Telecommunication networks
- Local Area Networks (LANs)
- Premise installation

MPO adapter



Product Code: AD-MPO

Features

- Compact design, accommodate 4, 8 or 12 fiber ribbons
- High precision alignment
- Low insertion and return loss and back reflection
- In Compliance with Bell core 326 and TIA/EIA 604 Standards
- Easy Installation

Applications

- Gigabit Ethernet
- CATV
- Video
- Active Device/Transceiver Interface
- Telecommunication networks
- Metro networks
- Local Area Networks (LANs)
- Premise installations
- Industrial, military
- Multimedia

MTRJ adapter



Features

- Plug-jack (RJ-45) design
- TIA/EIA 568-A Compliant

Product Code: AD-MTRJ

Applications

- Gigabit Ethernet, Asynchronous Transmission Method (ATM)
- CATV
- Video
- Active Device/Transceiver Interface
- Premise Installations
- Telecommunication Networks
- Multimedia
- Industrial and Military

MU adapter



Product Code: AD-MU

SC Adapters

Optic SC adapter



Features

- Compliance with Telcordia, ANSI, IEC, TIA/EIA, NTT and JIS specifications

Product Code: AD-SC-MM-SX

- Low insertion loss & return loss
- High precision alignment

Specifications

Characteristics	Unit	Single Mode & Multimode
Insertion Loss (IL)	dB	≤0.3
Exchangeability	dB	≤0.2
Repeatability (500 remates)	dB	≤0.2
Sleeve material	-	Zirconia or Phosphor bronze
Housing material	-	Nickel plated Copper or plastic
Operating Temperature	°C	40 ~ +70
Storage Temperature	°C	-40 ~ +70

Applications

- CATV
- Metro
- Telecommunication networks
- Local Area Networks (LANs)
- Premise installation

SC APC Duplex adapter



Product Code: AD-SC-APC-DX

Features

- Compliance with Telcordia, ANSI, IEC, TIA/EIA, NTT and JIS specifications
- Low insertion loss & return loss
- High precision alignment

Specifications

Characteristics	Unit	Single Mode & Multimode
Insertion Loss (IL)	dB	≤0.3
Exchangeability	dB	≤0.2
Repeatability (500 remates)	dB	≤0.2
Sleeve material	-	Zirconia or Phosphor bronze
Housing material	-	Nickel plated Copper or plastic
Operating Temperature	°C	40 ~ +70
Storage Temperature	°C	-40 ~ +70

Applications

- CATV
- Metro
- Telecommunication networks
- Local Area Networks (LANs)
- Premise installation

SC APC Simplex adapter



Product Code: AD-SC-APC-SX

Features

- Compliance with Telcordia, ANSI, IEC, TIA/EIA, NTT and JIS specifications
- Low insertion loss & return loss
- High precision alignment

Specifications

Characteristics	Unit	Single Mode & Multimode
Insertion Loss (IL)	dB	≤0.3
Exchangeability	dB	≤0.2
Repeatability (500 remates)	dB	≤0.2
Sleeve material	-	Zirconia or Phosphor bronze
Housing material	-	Nickel plated Copper or plastic
Operating Temperature	°C	40 ~ +70
Storage Temperature	°C	-40 ~ +70

Applications

- CATV
- Metro
- Telecommunication networks
- Local Area Networks (LANs)
- Premise installation

SC multimode Duplex adapter



Features

- Compliance with Telcordia, ANSI, IEC, TIA/EIA, NTT and JIS specifications
- Low insertion loss & return loss
- High precision alignment

Product Code: AD-SC-MM-DX

Specifications

Characteristics	Unit	Single Mode & Multimode
Insertion Loss (IL)	dB	≤0.3
Exchangeability	dB	≤0.2
Repeatability (500 remates)	dB	≤0.2
Sleeve material	-	Zirconia or Phosphor bronze
Housing material	-	Nickel plated Copper or plastic
Operating Temperature	°C	40 ~ +70
Storage Temperature	°C	-40 ~ +70

Applications

- CATV
- Metro
- Telecommunication networks
- Local Area Networks (LANs)
- Premise installation

SC singlemode Duplex adapter



Product Code: AD-SC-SM-DX

Features

- Compliance with Telcordia, ANSI, IEC, TIA/EIA, NTT and JIS specifications
- Low insertion loss & return loss
- High precision alignment

Specifications

Characteristics	Unit	Single Mode & Multimode
Insertion Loss (IL)	dB	≤0.3
Exchangeability	dB	≤0.2
Repeatability (500 remates)	dB	≤0.2
Sleeve material	-	Zirconia or Phosphor bronze
Housing material	-	Nickel plated Copper or plastic
Operating Temperature	°C	40 ~ +70
Storage Temperature	°C	-40 ~ +70

Applications

- CATV
- Metro
- Telecommunication networks
- Local Area Networks (LANs)
- Premise installation

SC singlemode Duplex adapter (metal housing)



Features

- Compliance with Telcordia, ANSI, IEC, TIA/EIA, NTT and JIS specifications
- Low insertion loss & return loss
- High precision alignment

Product Code: AD-SC-DX-METAL

Specifications

Characteristics	Unit	Single Mode & Multimode
Insertion Loss (IL)	dB	≤0.3
Exchangeability	dB	≤0.2
Repeatability (500 remates)	dB	≤0.2
Sleeve material	-	Zirconia or Phosphor bronze
Housing material	-	Nickel plated copper
Operating Temperature	°C	40 ~ +70
Storage Temperature	°C	-40 ~ +70

Applications

- CATV
- Metro
- Telecommunication networks
- Local Area Networks (LANs)
- Premise installation

SC singlemode Simplex adapter



Features

- Compliance with Telcordia, ANSI, IEC, TIA/EIA, NTT and JIS specifications
- Low insertion loss & return loss
- High precision alignment

Product Code: AD-SC-SM-SX

Specifications

Characteristics	Unit	Single Mode & Multimode
Insertion Loss (IL)	dB	≤0.3
Exchangeability	dB	≤0.2
Repeatability (500 remates)	dB	≤0.2
Sleeve material	-	Zirconia or Phosphor bronze
Housing material	-	Nickel plated Copper or plastic
Operating Temperature	°C	40 ~ +70
Storage Temperature	°C	-40 ~ +70

Applications

- CATV
- Metro
- Telecommunication networks
- Local Area Networks (LANs)
- Premise installation

SC singlemode Simplex adapter (metal housing)



Features

- Compliance with Telcordia, ANSI, IEC, TIA/EIA, NTT and JIS specifications
- Low insertion loss & return loss
- High precision alignment

Product Code: AD-SC-SX-METAL

Specifications

Characteristics	Unit	Single Mode & Multimode
Insertion Loss (IL)	dB	≤0.3
Exchangeability	dB	≤0.2
Repeatability (500 remates)	dB	≤0.2
Sleeve material	-	Zirconia or Phosphor bronze
Housing material	-	Nickel plated copper
Operating Temperature	°C	40 ~ +70
Storage Temperature	°C	-40 ~ +70

Applications

- CATV
- Metro
- Telecommunication networks
- Local Area Networks (LANs)
- Premise installation

ST Adapters

ST multimode adapter



Features

- Compact design
- High precision alignment
- Low insertion and return loss and back reflection

Product Code: AD-ST-MM

Specifications

Characteristics	Unit	Single Mode & Multimode
Insertion Loss (IL)	dB	≤0.3
Exchangeability	dB	≤0.2
Repeatability (500 remates)	dB	≤0.2
Sleeve material	-	Zirconia or Phosphor bronze
Housing material	-	Nickel plated Copper or plastic
Operating Temperature	°C	40 ~ +70
Storage Temperature	°C	-40 ~ +70

Applications

- Premise installations
- Telecommunication networks
- Metro networks
- Local Area Networks (LANs)
- Data processing networks
- Instrumentation

ST singlemode adapter



Features

- Compact design
- High precision alignment
- Low insertion and return loss and back reflection

Product Code: AD-ST-SM

Specifications

Characteristics	Unit	Single Mode & Multimode
Insertion Loss (IL)	dB	≤0.3
Exchangeability	dB	≤0.2
Repeatability (500 remates)	dB	≤0.2
Sleeve material	-	Zirconia or Phosphor bronze
Housing material	-	Nickel plated Copper or plastic
Operating Temperature	°C	40 ~ +70
Storage Temperature	°C	-40 ~ +70

Applications

- Premise installations
- Telecommunication networks
- Metro networks
- Local Area Networks (LANs)
- Data processing networks
- Instrumentation